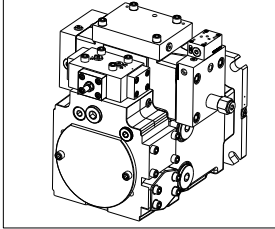
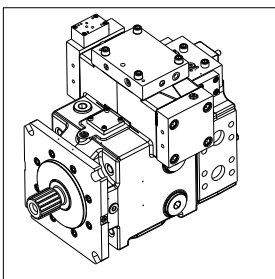
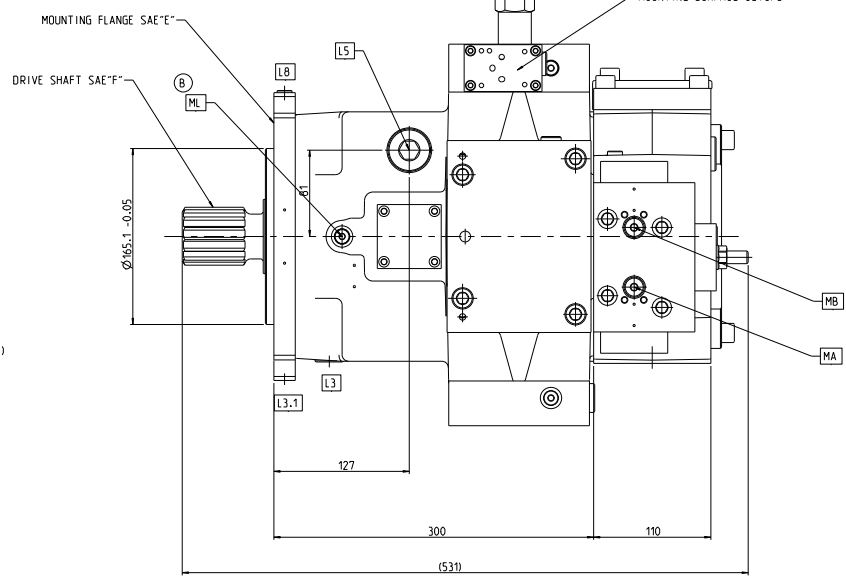
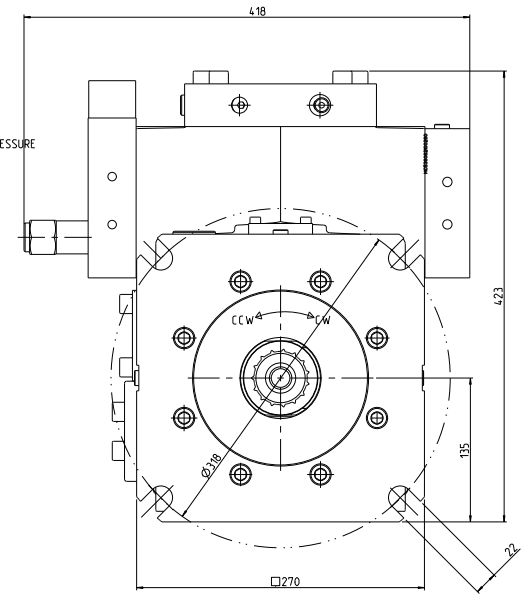
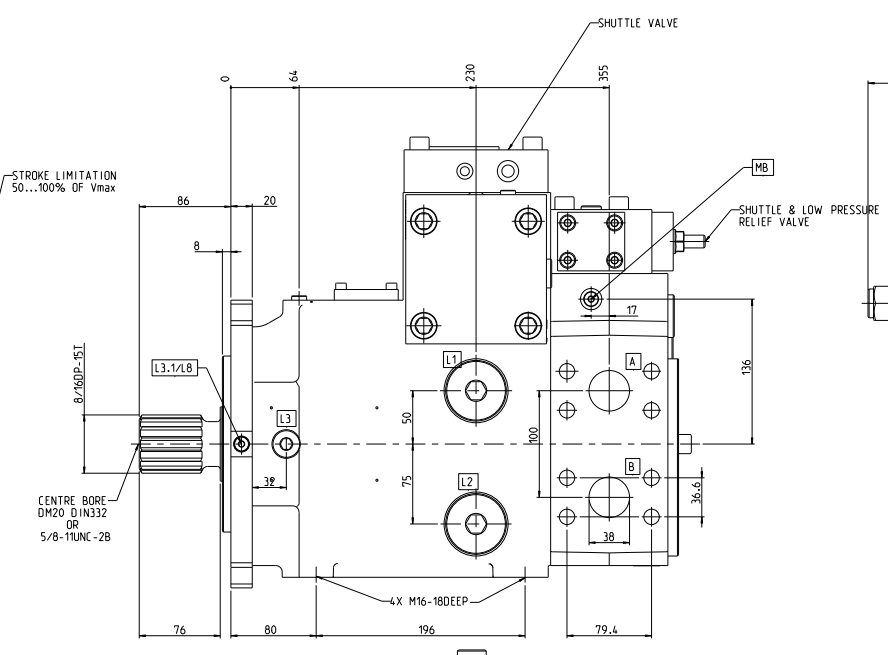
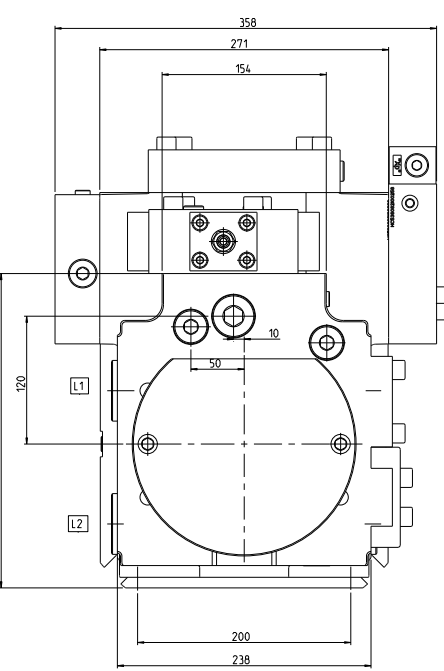


REVISIONS			
REV	DATE	APPROVED	REVISION
A	20/03/08	AL	ENGINEERING RELEASE
B	24/04/09	AL	IN 3000-FR-00-110 DIRECTION POSITION INTERCHANGED DIRECTION OF ROTATION TABLE CHANGED



- [A] SYSTEM PRESSURE PORT SAE 1 1/2". 6000PSI
- [B] SYSTEM PRESSURE PORT SAE 1 1/2". 6000PSI
- [L1] DRAIN PORT G 1 5/8"-12UNF-2B (ACCORDING TO MOUNTING POSITION USE UPPER PORT)
- [L2] DRAIN PORT G 1 1/4" (ACCORDING TO MOUNTING POSITION USE UPPER PORT)
- [L3] VENTILATION PORT FOR VERTICAL MOUNTING G 3/8" (SHAFT UPWARD)
- [L3.1] PORT G 1/4"
- [L51] OIL FILLING PLUG 1 1/16"-12UNF
- [L8] AIR BLEEDING PORT G 1/4"
- [MA] GAUGE PORT SYSTEM PRESSURE G 1/4"
- [MB] GAUGE PORT SYSTEM PRESSURE G 1/4"
- [ML] GAUGE PORT OF CASE PRESSURE G 1/4"
- (...) NORMALLY PLUGGED

MW S-250M07B501R02S V0AZP000A0000002574 04 10

DIRECTION OF ROTATION	INPUT	OUTPUT
RIGHT HAND ROTATION	B	A
LEFT HAND ROTATION	A	B

THE REPRODUCTION, DISTRIBUTION, AND UTILIZATION OF THIS DOCUMENT, AS WELL AS THE COMMUNICATION OF ITS CONTENTS TO OTHERS WITHOUT EXPLICIT AUTHORIZATION IS PROHIBITED. OFFENDERS WILL BE HELD LIABLE FOR THE PAYMENT OF DAMAGES. ALL RIGHTS RESERVED IN THE EVENT OF THE GRANT OF A PATENT, UTILITY MODEL, OR DESIGN. (PER ISO 18016)

<p>MPST2623/HE 80674.000002</p> <p>DATE: 13/05/08</p> <p>BY: AL</p> <p>REV: 13/05/08</p> <p>REVISIONS:</p> <p>INSTALLATION OF MW S-250... WITH DF-SPECIAL CONTROL</p> <p>REV: 13/05/08</p> <p>BY: AL</p> <p>REV: 13/05/08</p>	<p>INSTALLATION OF MW S-250... WITH DF-SPECIAL CONTROL</p> <p>REV: 13/05/08</p> <p>BY: AL</p> <p>REV: 13/05/08</p>
---	--

Z00000747950JHE4

MODEL NUMBER: HC 056174.000002
 PART NUMBER: D-HC 056174.000002