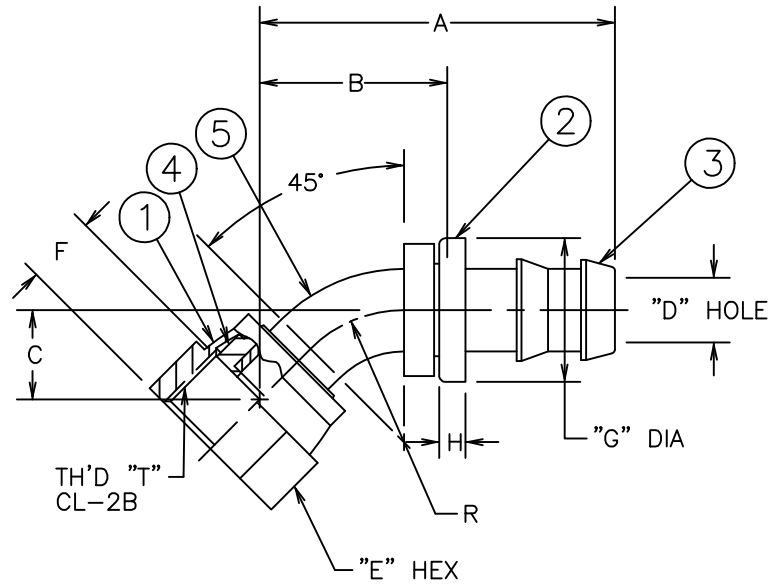


PART NUMBER	TH'D "T"	A ±.062	B	C	D REF	E REF	F REF	G ±.010	H REF	R REF	PROCESS AS FOLLOWS
FJ7023-0404S	9/16-18	1.674	.92	.470 350	.17	.69	.32	.615	.16	.44	2
FJ7023-0606S	11/16-16	1.839	.97	.490 370	.24	.81	.38	.725	.16	.50	2
FJ7023-0808S	13/16-16	2.346	1.33	.650 530	.37	.94	.43	.870	.16	.75	3
FJ7023-1212S	1 3/16-12	3.322	1.80	.890 770	.58	1.38	.57	1.185	.16	1.25	5

REVISIONS			
REV.	DESCRIPTION	DATE	APPROVED
C	REDRAWN ON CAD - LAST REV. "B" (1) 2.346 WAS 2.339 & 3.331 WAS 3.322 (2) 1.33 WAS 1.32 & 1.81 WAS 1.80 (3) NOTES #1(b), 2(b) & 3(b) WERE: "CADMIUM PLATE PER ACES 16P6"	3-20-92	EN-F12791 ER-F12791
D	(1) ADDED NOTE #4	9-23-92 P.T.R.	EN-F13373 DAI-23967
E	(1) REMOVED AND INACTIVATED FJ7023-1212S (2) REMOVED NOTE #1 "PROCESS AS FOLLOWS: (a) BRAZE PER ACES 67P2 OR P3 (b) ZINC PLATE PER ACES 16P47 (c) ASSEMBLE NUT PER ACES 2409P1 (d) ASSEMBLE CAP"(MTM)	9-15-95  M.M.	EN-F15724 DP-1063
F	(1) ADDED FJ7023-1212S & NOTE #5	1999-03-15 R.D.G.	EN-F18696 RPS-4743

E 1 F 1 C 1 C 2



5. PROCESS AS FOLLOWS:  
(a) BRAZE PER ACES 67P2 OR P3.  
(b) ZINC PLATE PER ACES 16P47.  
(c) ASSEMBLE CAP.  
(d) ASSEMBLE NUT PER ACES 2409P1. F 1

4. CAN BE MADE FROM TUBING PER SPECIFICATIONS ON ELBOW DRAWING. D 1

3. PROCESS AS FOLLOWS:  
(a) BRAZE NIPPLE PER ACES 67P2, P3 OR P26  
AND SHOULDER PER ACES 67P2 OR P3.  
(b) ZINC PLATE PER ACES 16P47.  
(c) ASSEMBLE NUT PER ACES 2409P1.  
(d) ASSEMBLE CAP. C 3

2. PROCESS AS FOLLOWS:  
(a) BRAZE PER ACES 67P3 OR P26.  
(b) ZINC PLATE PER ACES 16P47.  
(c) ASSEMBLE NUT PER ACES 2409P1.  
(d) ASSEMBLE CAP. C 3

1. C 3 E 2

E 1 F 1

FJ7023-1212S	FC1473-12S	4213-1-12B	4131-12S	FC1500-1212S	404501-12S
FJ7023-0808S	FC1473-08S	4213-1-8B	4131-8S	FC1500-0808S	404501-8S
FJ7023-0606S	FC1473-06S	4213-1-6B	4131-6S	FC1500-0606S	404501-6S
FJ7023-0404S	FC1473-04S	4213-1-4B	4131-5-4S	FC1500-0405S	FC1385-05S
PART NUMBER	1 NUT	2 HOSE CAP	3 NIPPLE	4 SHOULDER	5 ELBOW 4

LIST OF MATERIALS

ITEM NO.	MATERIAL	DRAWN TERRY BAKER	DATE 3-20-92	CHECKED R.D.GARRETT	DATE 3-25-92	APPROVED R.D.GARRETT	DATE 3-25-92	RELEASED EN-F12791	DATE 3-25-92	PROJECT NO. ER-F12791	APC NO.	DESIGN APPROVED	ITEM TYPE DADA
1	STEEL												
2	BRASS												
3	STEEL												
4	STEEL												
5	STEEL												

FLUID CONVEYANCE DIVISION

DRAWING TITLE  
FITTING ASSEMBLY  
45°, ORS FEMALE SWIVEL, 2556 HOSE

SIZE (CAGE) CODE NO. DRAWING NUMBER  
C 01276 FJ7023-S

SHEET