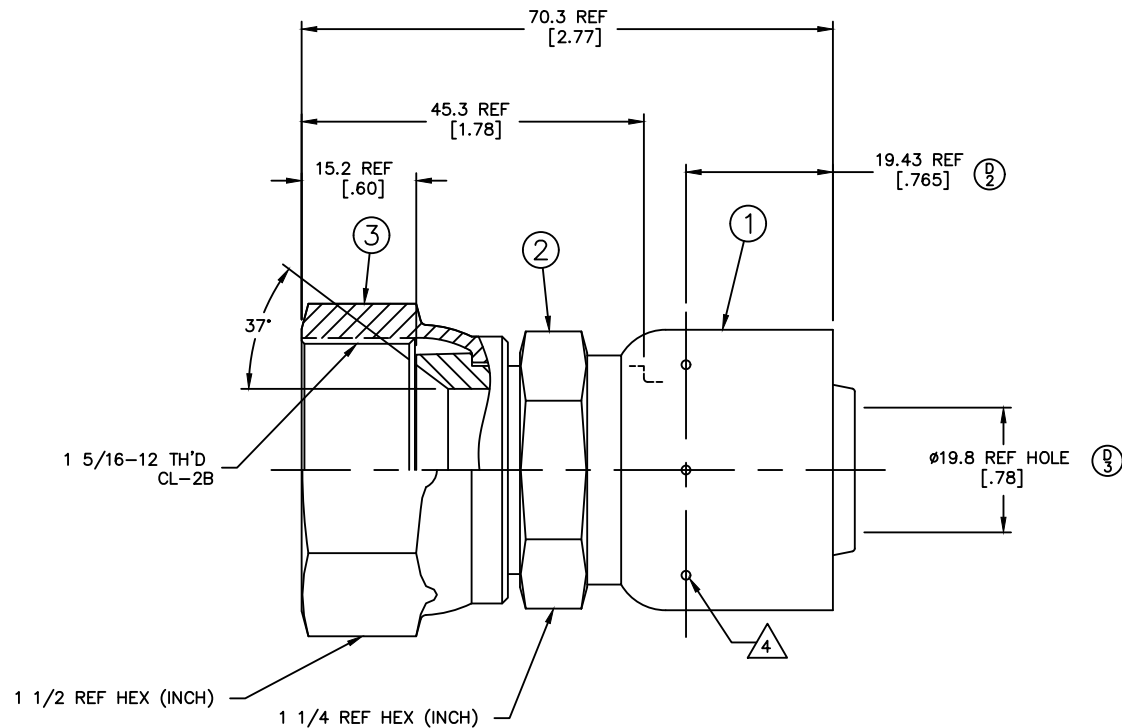


| REVISIONS | | | |
|-----------|--|-----------------------|----------------------|
| REV | DESCRIPTION | DATE | APPROVED |
| C | REACTIVATED AS PER REV "A" TO SHOW AEROQUIP DESIGN | 2006-05-12 RHJ/KBM | EN-F30034 DP-1299 |
| D | ADDED MARKING FOR CRIMP LOCATION. UPDATED DRAWING ACCORDINGLY 1) ADDED NOTE #4 2) ADDED DIMENSION 3) WAS $\phi 16.5$ [.65] REF HOLE | 2021-11-16 ARK | CO-0221251 |



△ CRIMP LOCATION IMPRESSION MARK (6-8 PLACES). (4)

3. DIMENSIONS ARE IN MILLIMETERS [INCHES].

2. THERE SHOULD BE NO SOCKET MOVEMENT ON THE NIPPLE AFTER CRIMPING.

1. PROCESS AS FOLLOWS:

(a) CRIMP NUT PER ACES 2813.

(b) CRIMP SOCKET PER ES 2409P17.

| FJ3114-1616S | FW1186-16S | FW1231-1616S | 210204-16S | | |
|--|------------|----------------------------|---|----------------|-----------|
| AEROQUIP PART NUMBER | (1) SOCKET | (2) NIPPLE | (3) NUT | | |
| LIST OF MATERIALS | | | | | |
| ITEM NO. | MATERIAL | DRAWN T. HARTFORD | FLUID CONVEYANCE DIVISION DRAWING TITLE FITTING ASSEMBLY SAE 37° SWIVEL, 1503 HOSE | | |
| 1 | STEEL | CHECKED D. BAILEY | | | |
| 2 | STEEL | APPROVED R.D. GARRETT | | | |
| 3 | STEEL | RELEASE DATE 2000-05-25 | | | |
| | | EN-F19970 | SIZE | DRAWING NUMBER | REV |
| | | DP-1290 | A2 | FJ3114-1616S | D |
| | | THIRD ANGLE PROJECTION | SCALE | DIST | CAGE CODE |
| | | | 2/1 | U | 01276 |
| | | | | | SHEET |
| | | | | | 1 |
| <small>THE REPRODUCTION, DISTRIBUTION AND UTILIZATION OF THIS DOCUMENT AS WELL AS THE COMMUNICATION OF ITS CONTENTS TO OTHERS WITHOUT EXPLICIT AUTHORIZATION IS PROHIBITED. OFFENDERS WILL BE HELD LIABLE FOR THE PAYMENT OF DAMAGES. ALL RIGHT RESERVED IN THE EVENT OF THE GRANT OF A PATENT, UTILITY MODEL OR DESIGN. (PER ISO 16016)</small> | | | | | |