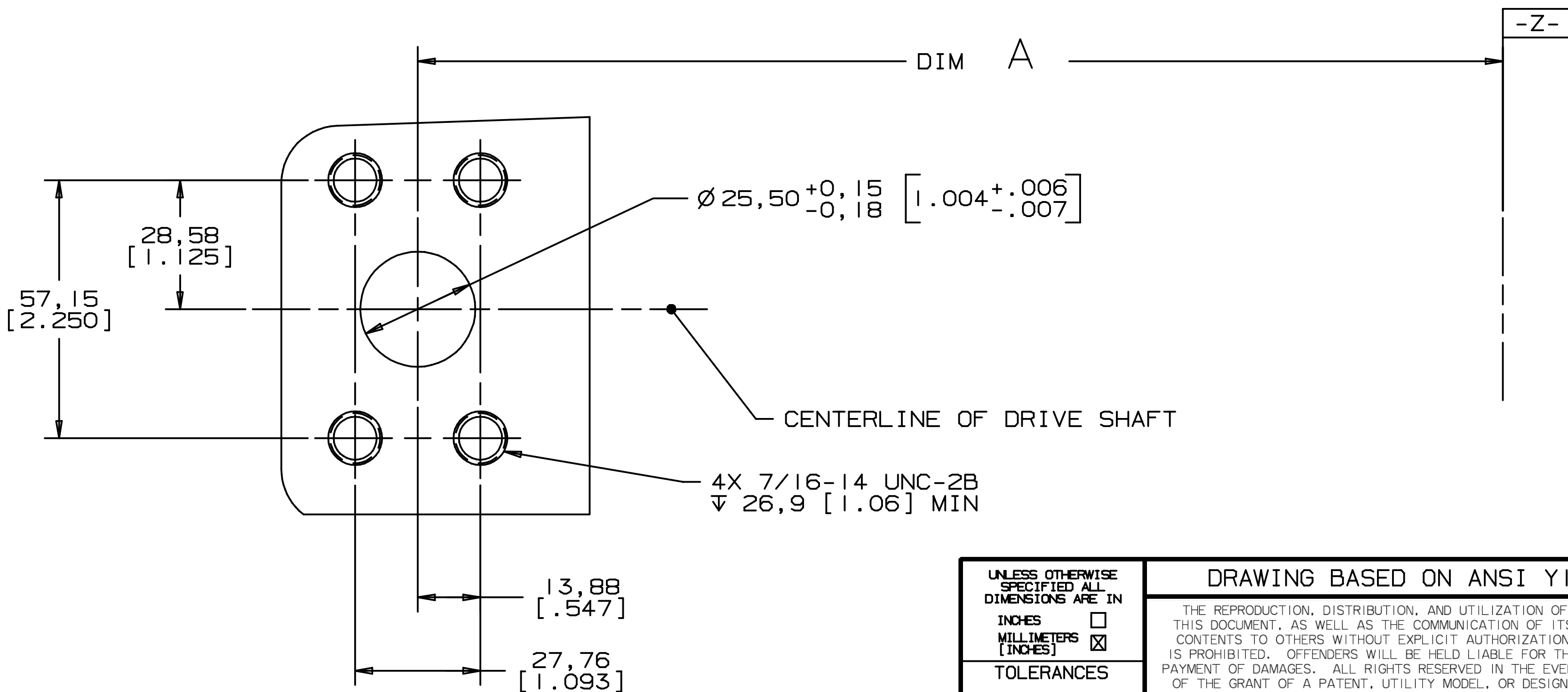


DISPLACEMENT	DIM A
54,34 cm ³ /r [3.316 in ³ /r]	240,6 [9.47]
63,66 cm ³ /r [3.885 in ³ /r]	
75,28 cm ³ /r [4.594 in ³ /r]	
89,13 cm ³ /r [5.439 in ³ /r]	265,2 [10.44]
105,4 cm ³ /r [6.431 in ³ /r]	

REV	DESCRIPTION	BY	CHK	DATE	ECN
A	RELEASE FOR SAMPLES AND ESTIMATE	RLL		5-9-95	X7920
B	ENGINEERING RELEASE	JJV		4-15-96	28055
C	-1) DIM "A" WAS (240,6[9.47]) -2) ADDED DIM "A" TABULATION	JED		6-19-96	28276



1.00 SAE 4-BOLT SPLIT FLANGE PORT
HIGH PRESSURE SERIES (CODE 62)

UNLESS OTHERWISE SPECIFIED ALL DIMENSIONS ARE IN INCHES <input type="checkbox"/> MILLIMETERS <input checked="" type="checkbox"/> [INCHES]	DRAWING BASED ON ANSI Y14.5M-1982	
	THE REPRODUCTION, DISTRIBUTION, AND UTILIZATION OF THIS DOCUMENT, AS WELL AS THE COMMUNICATION OF ITS CONTENTS TO OTHERS WITHOUT EXPLICIT AUTHORIZATION IS PROHIBITED. OFFENDERS WILL BE HELD LIABLE FOR THE PAYMENT OF DAMAGES. ALL RIGHTS RESERVED IN THE EVENT OF THE GRANT OF A PATENT, UTILITY MODEL, OR DESIGN. (PER ISO 16016)	
TOLERANCES .X ± --- .XX ± --- .XXX ± --- < ± ---	DRAWN BY/DATE RLL 5-17-95 CHECKED BY/DATE JGS 10-13-96 ENGRG BY/DATE MFW 10-29-95 METALLURGY BY/DATE ---	MATERIAL/HEAT TREAT TITLE HIGH PRESSURE PORT INSTALLATION
UNSPECIFIED RADII ARE --- UNSPECIFIED DRAFT ANGLES ARE ---	THIRD ANGLE PROJECTION DO NOT SCALE	MICROINCHES <input type="checkbox"/> MICROMETERS <input type="checkbox"/> [MICROINCHES] <input checked="" type="checkbox"/> ARITHMETICAL AVERAGE <input checked="" type="checkbox"/>
DRAWING FORMAT CADD <input checked="" type="checkbox"/> MANUAL <input type="checkbox"/>	NUMBER A-993-002	SCALE 1/1 SHEET 1 OF 1

