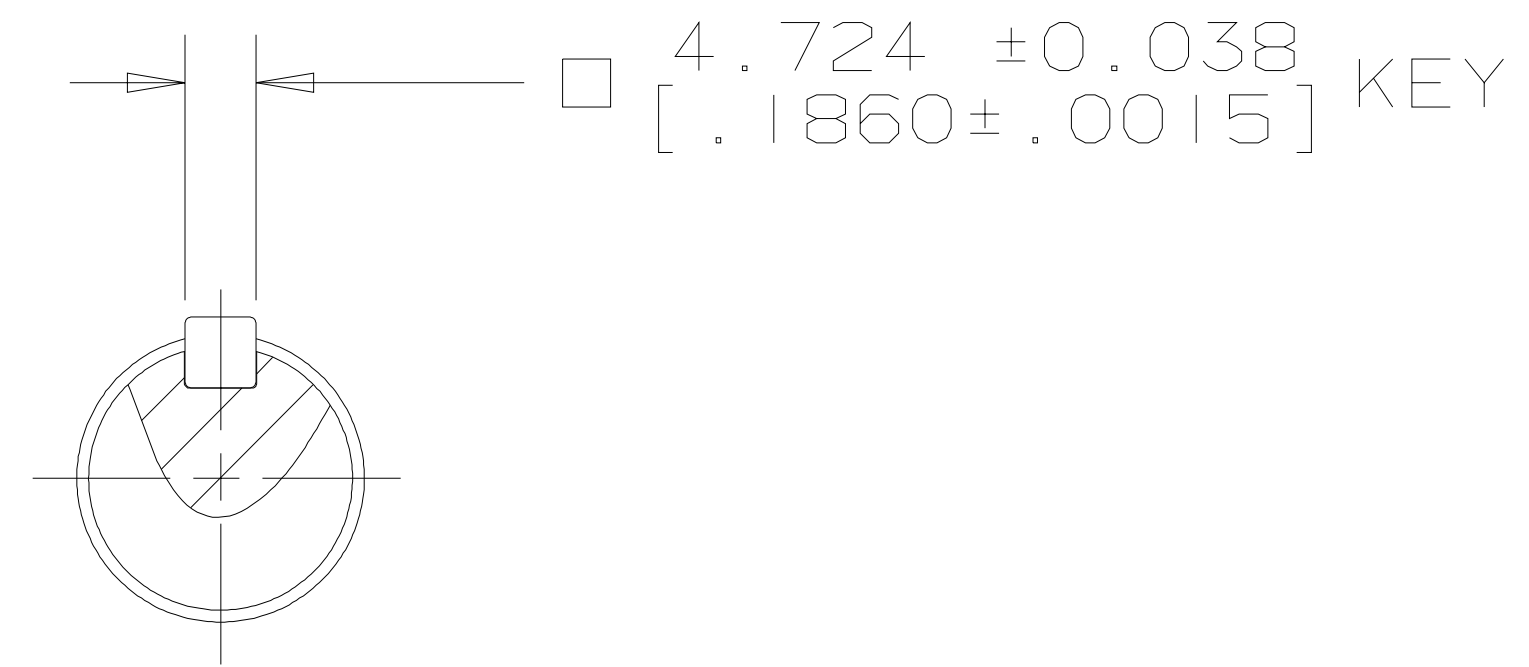


- J -

REV	DESCRIPTION	BY	CHK	DATE	ECN
A	ENGINEERING RELEASE	MLL	GCB	9-15-95	MI 4146
B	REVISED	CEW	CEW	1-19-05	50354



H

UNLESS OTHERWISE SPECIFIED ALL DIMENSIONS ARE IN INCHES <input type="checkbox"/> MILLIMETERS <input checked="" type="checkbox"/> [INCHES]	DRAWING BASED ON ANSI Y14.5M-1982		Danfoss
	THE REPRODUCTION, DISTRIBUTION, AND UTILIZATION OF THIS DOCUMENT, AS WELL AS THE COMMUNICATION OF ITS CONTENTS TO OTHERS WITHOUT EXPLICIT AUTHORIZATION IS PROHIBITED. OFFENDERS WILL BE HELD LIABLE FOR THE PAYMENT OF DAMAGES. ALL RIGHTS RESERVED IN THE EVENT OF THE GRANT OF A PATENT, UTILITY MODEL, OR DESIGN. (PER ISO 16016)		
TOLERANCES .X ± --- .XX ± REF .XXX ± ONLY < ± ---	DRAWN BY/DATE MLL 9-27-95 CHECKED BY/DATE GCB 9-30-95 ENGRG BY/DATE RJA 10-2-95 METALLURGY BY/DATE -----	MATERIAL/HEAT TREAT TITLE SHAFT INSTALLATION	
UNSPECIFIED RADII ARE ---	<input type="checkbox"/> MICROINCHES <input checked="" type="checkbox"/> MICROMETERS [MICROINCHES]	NUMBER A-349-082	
UNSPECIFIED DRAFT ANGLES ARE ---	<input type="checkbox"/> THIRD ANGLE PROJECTION <input checked="" type="checkbox"/> DO NOT SCALE	<input type="checkbox"/> ARITHMETICAL AVERAGE <input checked="" type="checkbox"/>	SCALE 1/1 SHEET 1 OF 1