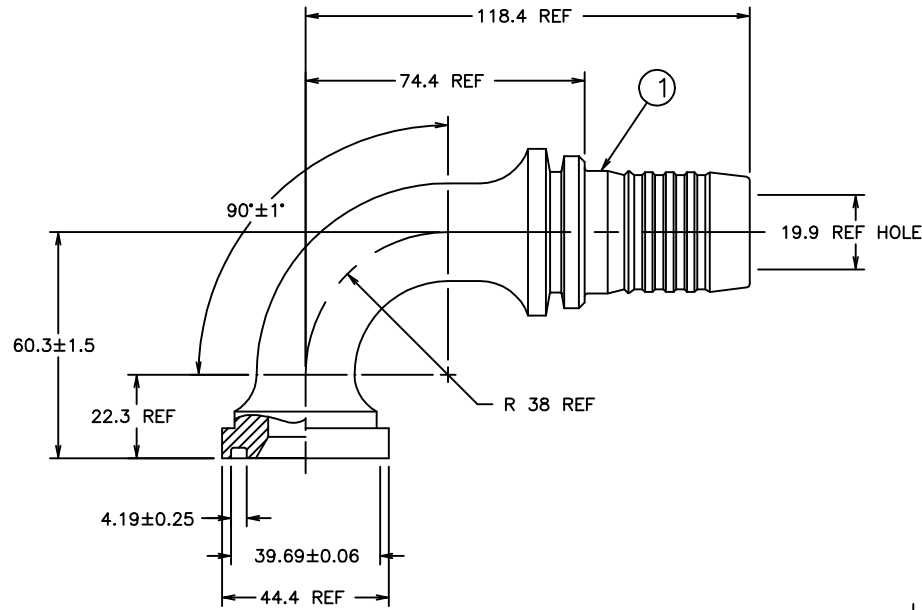


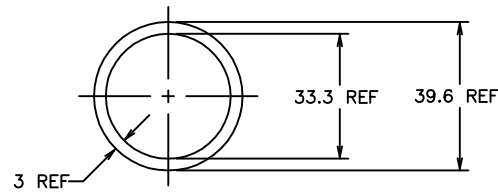
THE REPRODUCTION, DISTRIBUTION AND UTILIZATION OF THIS DOCUMENT AS WELL AS THE COMMUNICATION OF ITS CONTENTS TO OTHER WITHOUT EXPLICIT AUTHORIZATION IS PROHIBITED. OFFENDERS WILL BE HELD LIABLE FOR THE PAYMENT OF DAMAGES. ALL RIGHT RESERVED IN THE EVENT OF THE GRANT OF A PATENT, UTILITY MODEL OR DESIGN. (PER ISO 10016)

REVISIONS			
REV	DESCRIPTION	DATE	APPROVED
H	REDRAWN & REDESIGNED - LAST REV "G" (WAS BRAZE DESIGN)	8-8-96	EN-F16596 DP-1141



118.4	4.66
74.4	2.93
60.3±1.5	2.37±.06
44.4	1.75
39.69±0.06	1.5625±.0025
39.6	1.56
38	1.50
33.3	1.31
22.3	.88
19.9	.78
4.19±0.25	.165±.010
3	.12
MM	INCH

CONVERSION



2 O-RING DETAIL

METRIC

CONVERTED DRAWING CADAM to AutoCAD 8/98

REV. H  
SH.  
1S16FLB20  
DWG. NO.

2 O-RING SHOWN FOR REFERENCE ONLY. SUPPLIED BUT NOT FURNISHED WITH ASSEMBLY.

1. PROCESS AS FOLLOWS:  
 (a) BEND NIPPLE TO DIMENSIONS SHOWN.  
 (b) ZINC PLATE PER ACES 2751.

1S16FLB20	1F40041-1620AB			
AEROQUIP PART NUMBER	① NIPPLE			
LIST OF MATERIALS				
ITEM NO.	MATERIAL	DRAWN J.L. HUFFMAN	FLUID CONVEYANCE DIVISION	
1	STEEL	CHECKED R.D.GARRETT		
		APPROVED R.D.GARRETT	DRAWING TITLE	
		RELEASE DATE 8-9-96	NIPPLE ASSEMBLY 90°, SPLIT FLANGE TYPE (CODE 61), 2781 HOSE	
		EN-F16596 DP-1141	SIZE C	DRAWING NUMBER 1S16FLB20
		THIRD ANGLE PROJECTION	REV H	
		SCALE 1/1	DIST U	CAGE CODE 01276
				SHEET NO