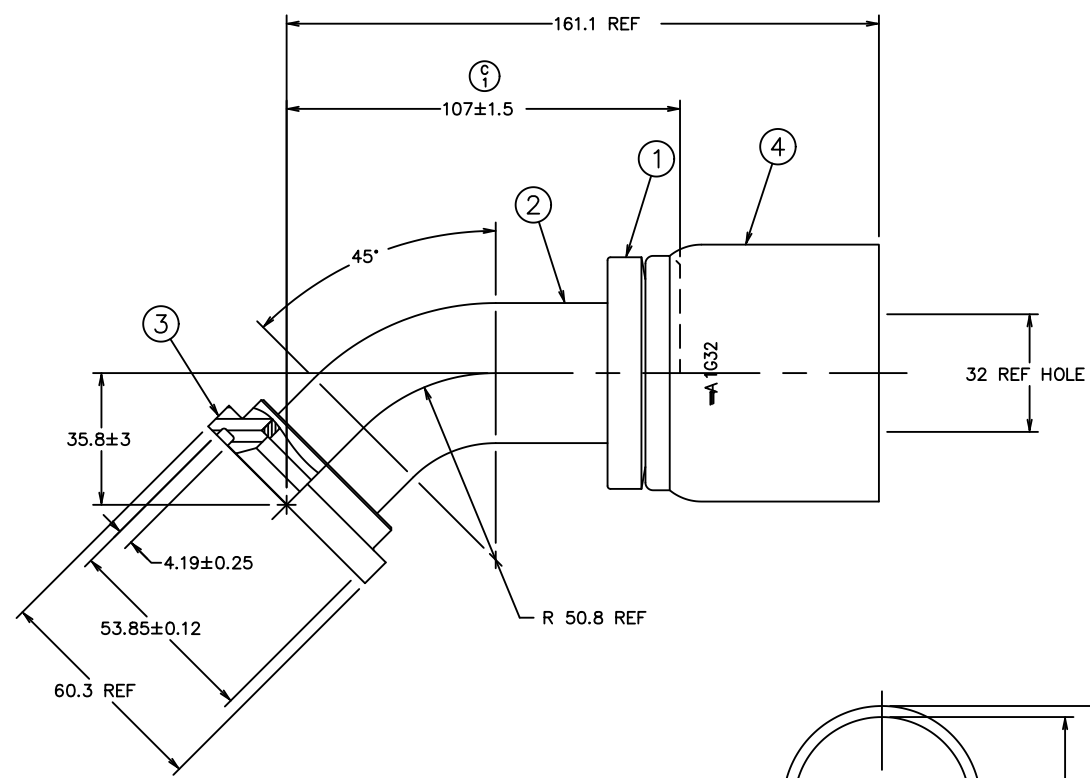


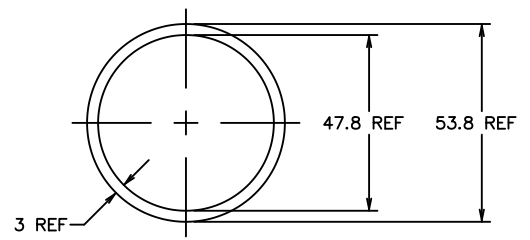


REVISIONS			
REV	DESCRIPTION	DATE	APPROVED
B	REDRAWN - SUPERSEDES 1G_FLA_ REV. "A" FOR 1G24FLA32	12-14-95	EN-F16140 DP-24900
C	(1) WAS 109±1.5	7-2-96	EN-F16447 DP-1141



161.1	6.34
107±1.5	4.21±.06
60.3	2.37
53.85±0.12	2.120±.005
53.8	2.12
50.8	2.00
47.8	1.88
35.8±3	1.41±.12
32	1.26
4.19±0.25	.165±.010
3	.12
MM	INCH

CONVERSION



△ O-RING DETAIL

METRIC

1G24FLA32	1F40014-2432AB	1F40035-24-01AB	4624-24S	1G32
AEROQUIP PART NUMBER	① NIPPLE	② ELBOW	③ SHOULDER	④ SOCKET
LIST OF MATERIALS				
ITEM NO.	MATERIAL	DRAWN	R.D.GARRETT	
1	STEEL	CHECKED	M.MOLINA	
2	STEEL	APPROVED	R.D.GARRETT	
3	STEEL	RELEASE DATE	12-19-95	
4	STEEL	EN-F16140 DP-24900	SIZE	C
		THIRD ANGLE PROJECTION	DRAWING NUMBER	1G24FLA32
		SCALE	1/1	DIST
		CAGE CODE	01276	SHEET NO

3. 1S24FLA32 NIPPLE ASSEMBLY MAY BE SUBSTITUTED FOR ITEMS #1, #2, AND #3.
- △ O-RING SHOWN FOR REFERENCE ONLY. SUPPLIED BUT NOT FURNISHED WITH ASSEMBLY.
1. PROCESS AS FOLLOWS:
 (a) BRAZE PER ACES 2814.
 (NIPPLE ON LONG TANGENT END)
 (b) ZINC PLATE PER ACES 2751.
 (c) ASSEMBLE SOCKET PER ACES 2813.



CONVERTED DRAWING CADAM to AutoCAD 8/98

DWG. NO. 1G24FLA32 SH. REV. C