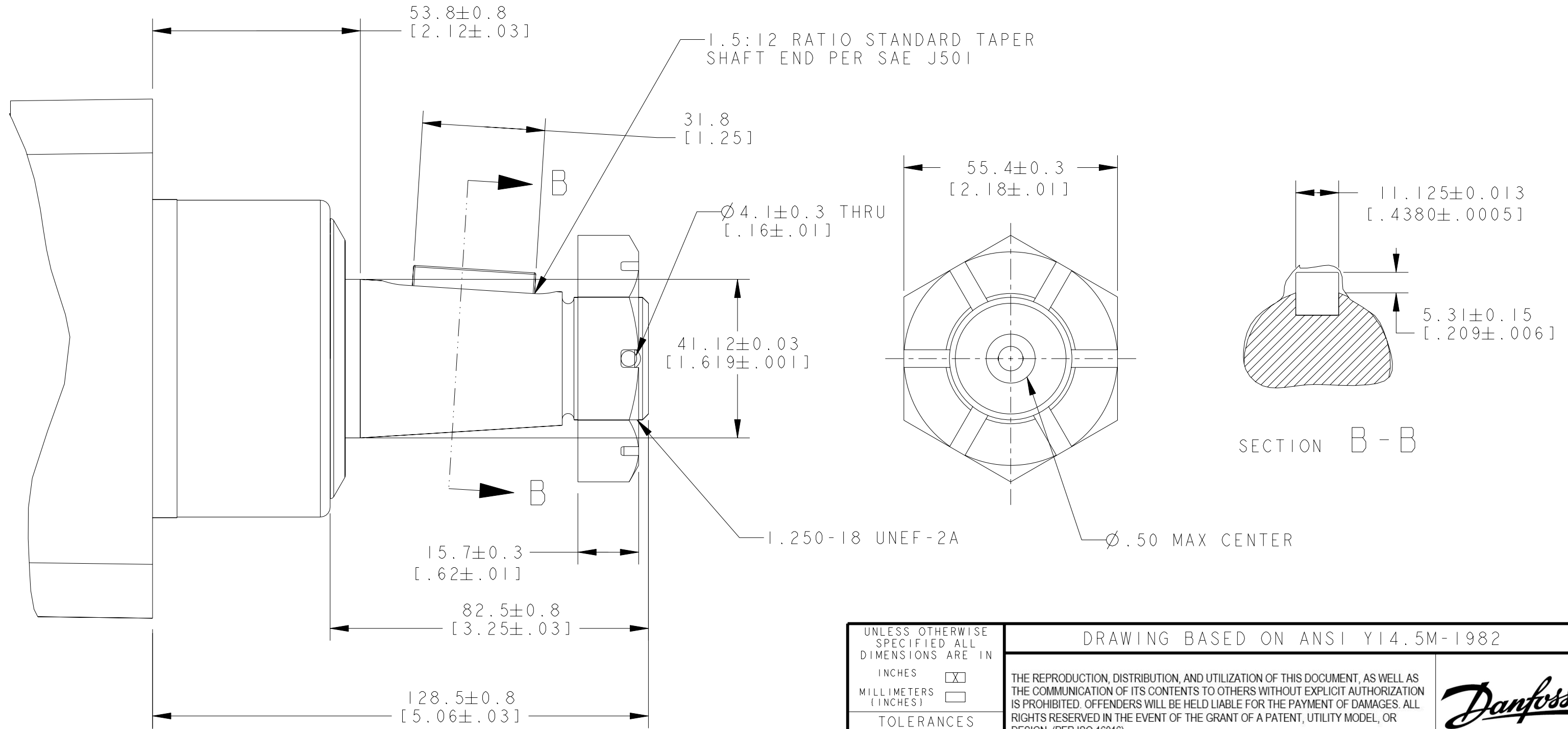


REV	DESCRIPTION	BY	CHK	DATE	ECN / MPS
A	ENGINEERING RELEASE	SKS		05/17/10	M79158



- A -

NOTE:
 1 MOUNTING TYPE : AA
 2 OUTPUT SHAFT : 03

UNLESS OTHERWISE SPECIFIED ALL DIMENSIONS ARE IN INCHES <input checked="" type="checkbox"/> MILLIMETERS (INCHES) <input type="checkbox"/> TOLERANCES .X ± 0.1 .XX ± 0.01 .XXX ± 0.001 < ± 0.5° UNSPECIFIED RADII ARE: - UNSPECIFIED DRAFT ANGLES ARE: ° B SIZE	DRAWING BASED ON ANSI Y14.5M-1982	
	THE REPRODUCTION, DISTRIBUTION, AND UTILIZATION OF THIS DOCUMENT, AS WELL AS THE COMMUNICATION OF ITS CONTENTS TO OTHERS WITHOUT EXPLICIT AUTHORIZATION IS PROHIBITED. OFFENDERS WILL BE HELD LIABLE FOR THE PAYMENT OF DAMAGES. ALL RIGHTS RESERVED IN THE EVENT OF THE GRANT OF A PATENT, UTILITY MODEL, OR DESIGN. (PER ISO 16016)	
DRAWN SKS BY/DATE 05/18/10 CHECKED SKS BY/DATE 05/18/10 ENGRG -- BY/DATE -- METALLURGY - BY/DATE -	MATERIAL/HEAT TREAT - TITLE DELTA MOTOR SHAFT INSTALLATION	
THIRD ANGLE PROJECTION DO NOT SCALE ARITHMETICAL AVERAGE	MICROINCHES <input checked="" type="checkbox"/> MICROMETERS (MICROINCHES) <input type="checkbox"/> NUMBER A-2824-403 SCALE 1/1 SHEET 1 OF 1	