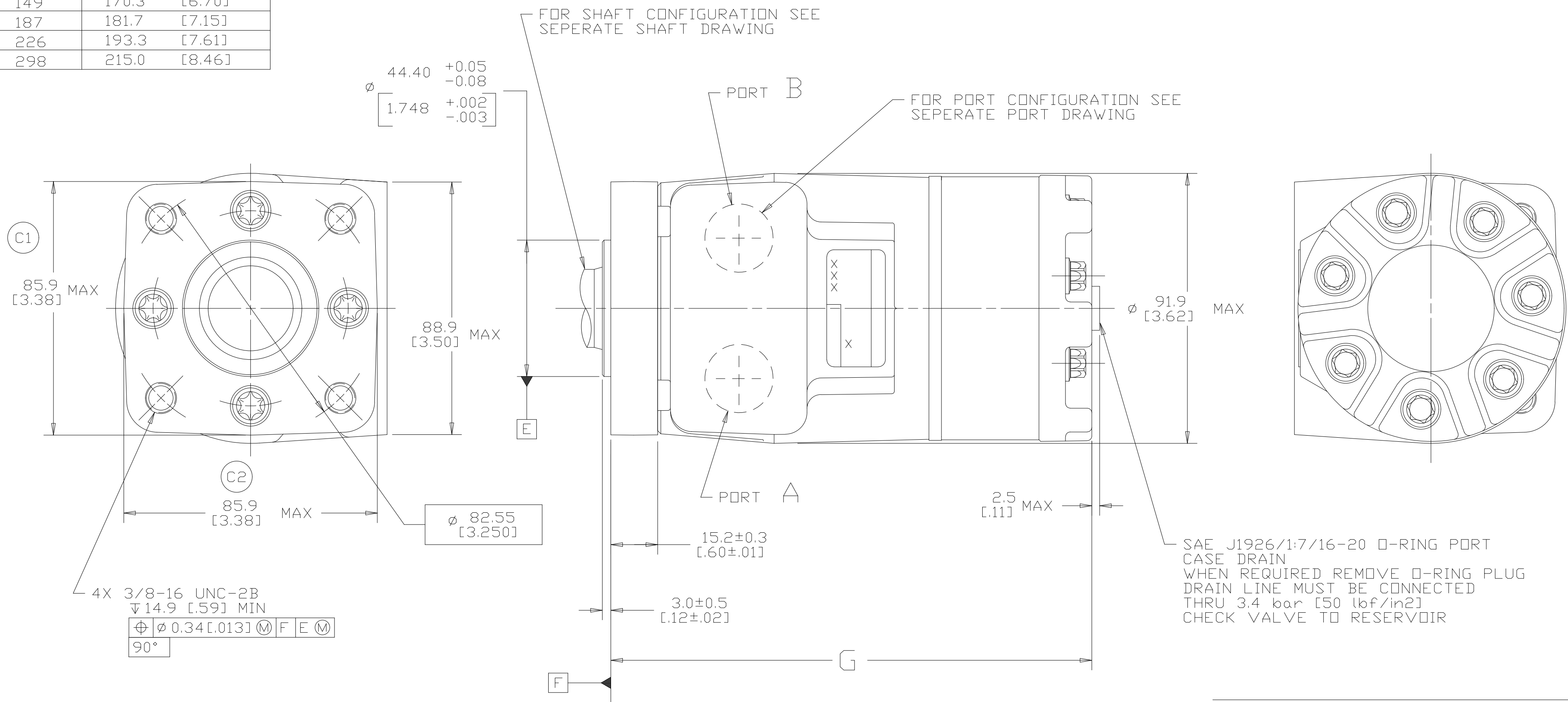


DISPL CODE	G	MAX
018	132.2	[5.21]
022	132.2	[5.21]
025	133.1	[5.24]
030	134.6	[5.30]
036	136.4	[5.37]
040	137.6	[5.42]
049	140.3	[5.53]
062	144.2	[5.68]
080	149.6	[5.89]
096	154.5	[6.08]
119	161.2	[6.35]
149	170.3	[6.70]
187	181.7	[7.15]
226	193.3	[7.61]
298	215.0	[8.46]

REV	DESCRIPTION	BY	DATE	ECN
A	ENGINEERING RELEASE	RAF	2-8-94	M11208
B	-1)X(3C) 88.9 [3.50] MAX WAS 84.6 [3.33] MAX -2)X(2C) Ø 91.9 [3.62] MAX WAS Ø 88.8 [3.49] MAX	JMM	10-26-94	26147
C	-1)X(4C) WAS 83.4 [3.28] MAX. -2)X(4B) WAS 83.4 [3.28] MAX.	AAK	04-07-04	46856
D	-1)X(4D)UPDATED TABLE FOR DISPL CODE -2)X(4A)NOTE 2 MOUNTING FLANGE WAS "B"	PM	03-27-07	0004355
E	-1)REVISED FOR STACK-UP -2)X(4D)TABULATION BLOCK REVISED AS PER STACK-UP -3) UPDATED DRAWING TO ASME Y14.5-2009 STD	YUP	12-02-13	M91219
F	(4A) NOTE 3 WAS CASE DRAIN : 1.....	SSP	12-26-15	0068068_1



NOTE

1 ROTATION STANDARD WHEN FACING SHAFT END OF MOTOR SHAFT TO ROTATE CLOCKWISE WHEN PORT "A" IS PRESSURIZED COUNTERCLOCKWISE WHEN PORT "B" IS PRESSURIZED

REVERSE WHEN FACING SHAFT END OF MOTOR, SHAFT TO ROTATE CLOCKWISE WHEN PORT "B" IS PRESSURIZED COUNTERCLOCKWISE WHEN PORT "A" IS PRESSURIZED

2 MOUNTING FLANGE BA = STANDARD, 4 BOLT: Ø 44.4 [1.75] X 3.0 [0.12] PILOT 3/8-16 THREADED HOLES ON Ø 82.6 [3.25] BOLT CIRCLE

3 CASE DRAIN 01 = 7/16-20 (END CAP)

CS REVIEWED FOR CLASSIFICATION PER ESP-042

DRAWING BASED ON ASME Y14.5-2009

UNLESS OTHERWISE SPECIFIED ALL DIMENSIONS ARE IN INCHES MILLIMETERS [INCHES]

TOLERANCES
 .X ± ---
 .XX ± ---
 .XXX ± ---
 ∠ ± ---°

UNSPECIFIED RADII ARE: -----
 UNSPECIFIED DRAFT ANGLES ARE: -----°

C SIZE DO NOT SCALE

THE REPRODUCTION, DISTRIBUTION AND UTILIZATION OF THIS DOCUMENT AS WELL AS THE COMMUNICATION OF ITS CONTENTS TO OTHER WITHOUT EXPLICIT AUTHORIZATION IS PROHIBITED. OFFENDERS WILL BE HELD LIABLE FOR THE PAYMENT OF DAMAGES. ALL RIGHT RESERVED IN THE EVENT OF THE GRANT OF A PATENT, UTILITY MODEL OR DESIGN. (PER ISD 16016)

Danfoss

DRAWN RAF BY/DATE 2-4-94
 CHECKED SDR BY/DATE 2-23-94
 ENGRG RVA BY/DATE 3-3-94
 METALLURGY ----- BY/DATE -----

MATERIAL/HEAT TREAT -----

TITLE
 T MOTOR INSTALLATION

NUMBER
 A-821-010

SCALE 1/1 SHEET 1 OF 1