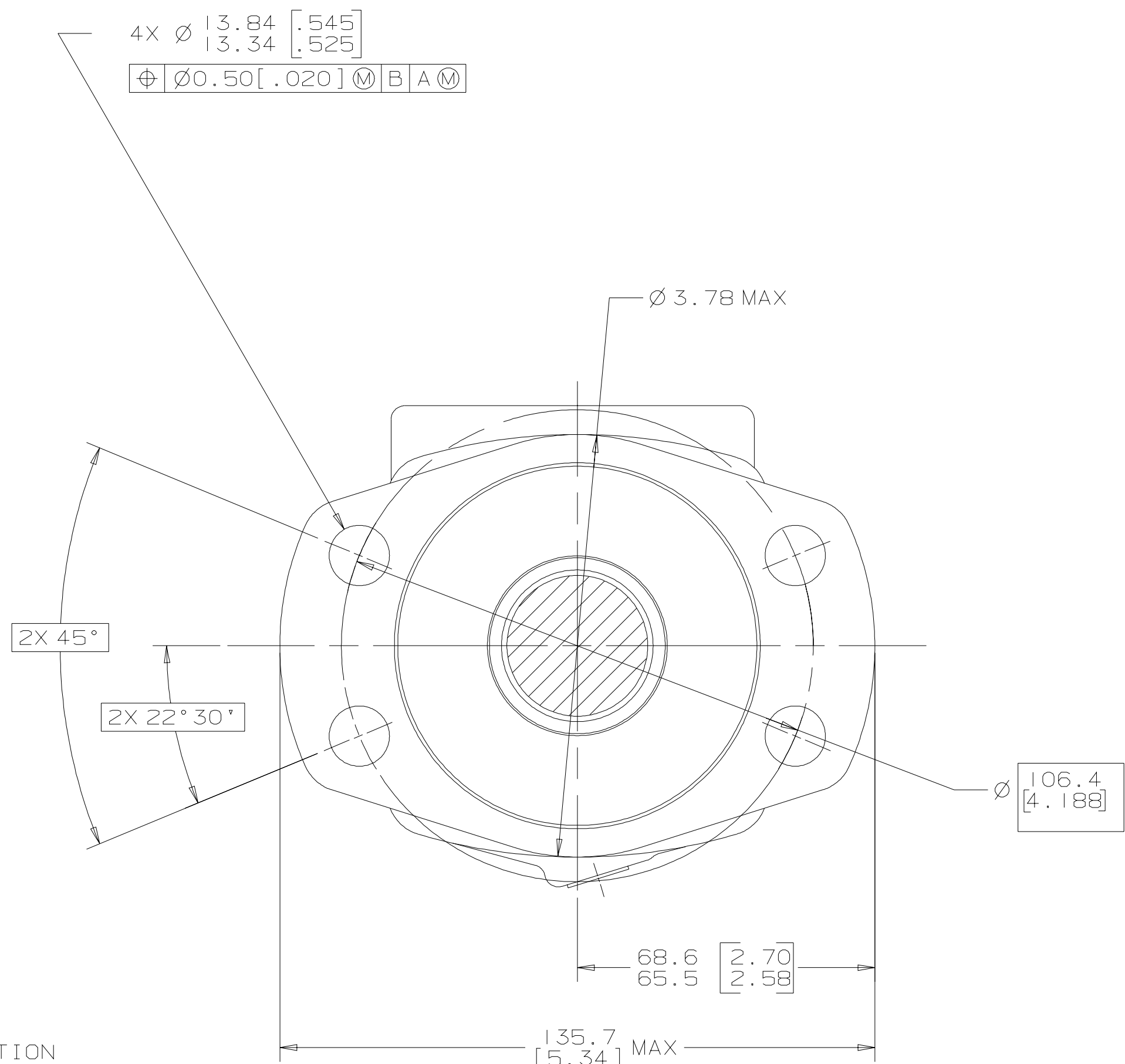
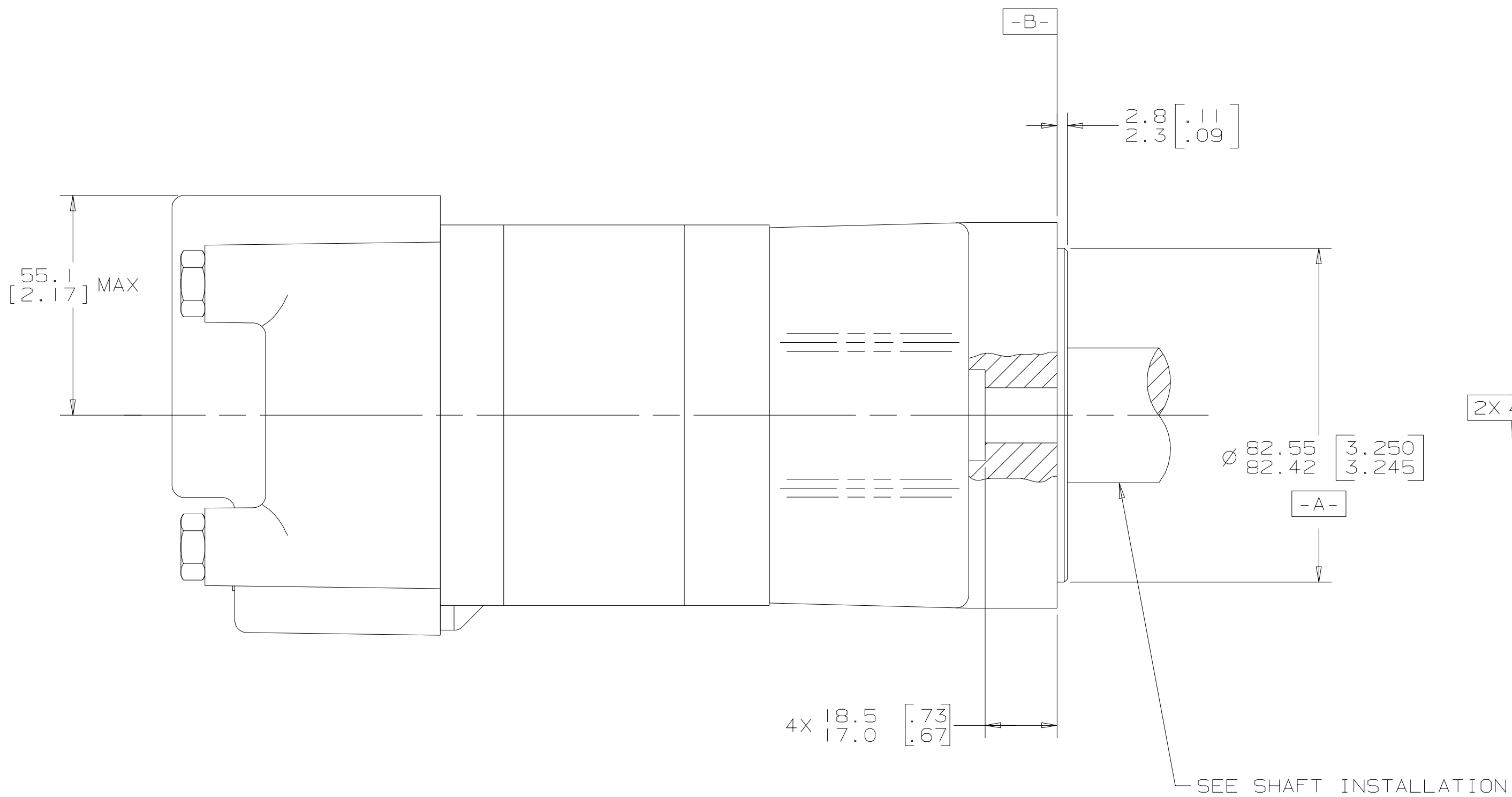
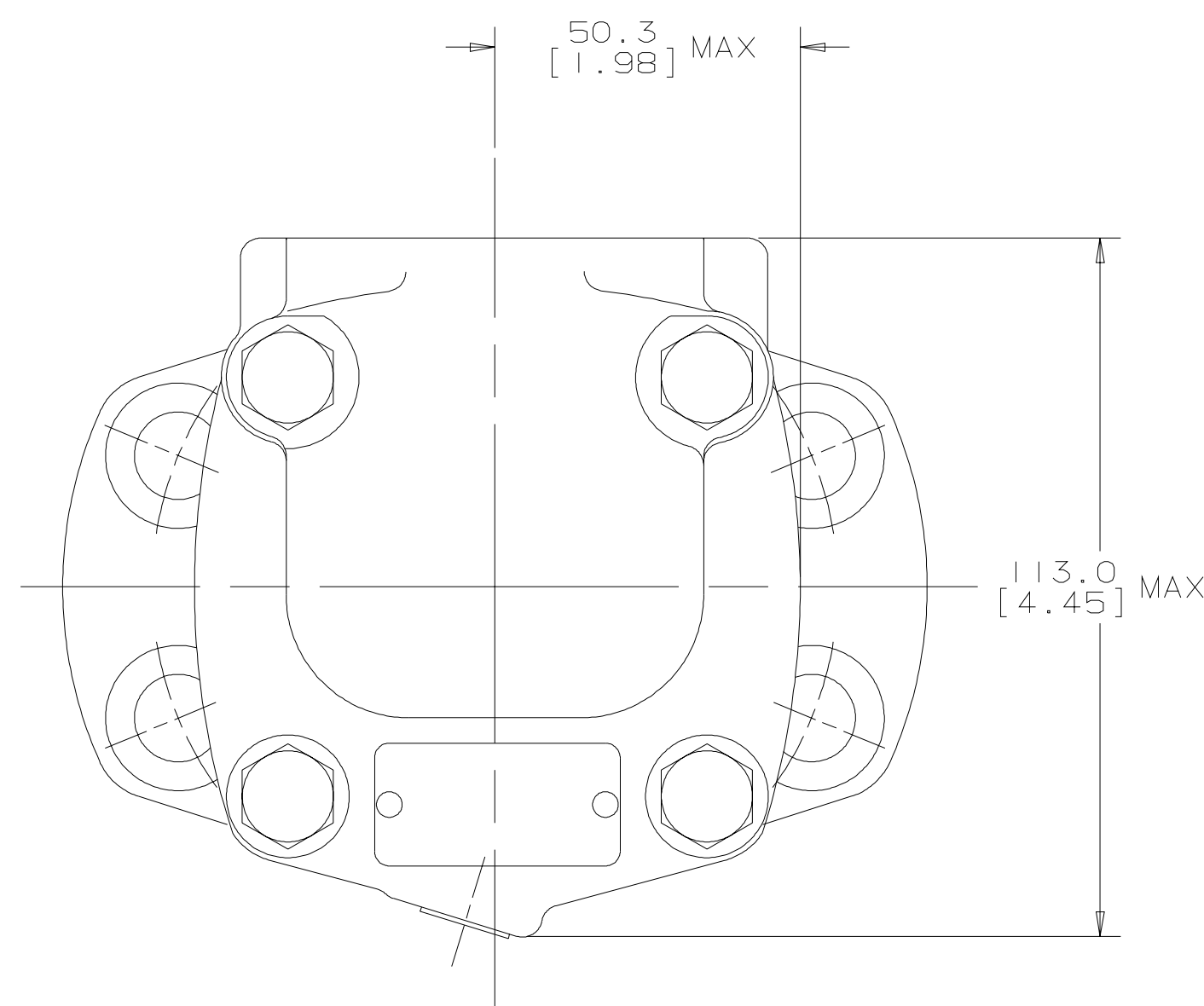
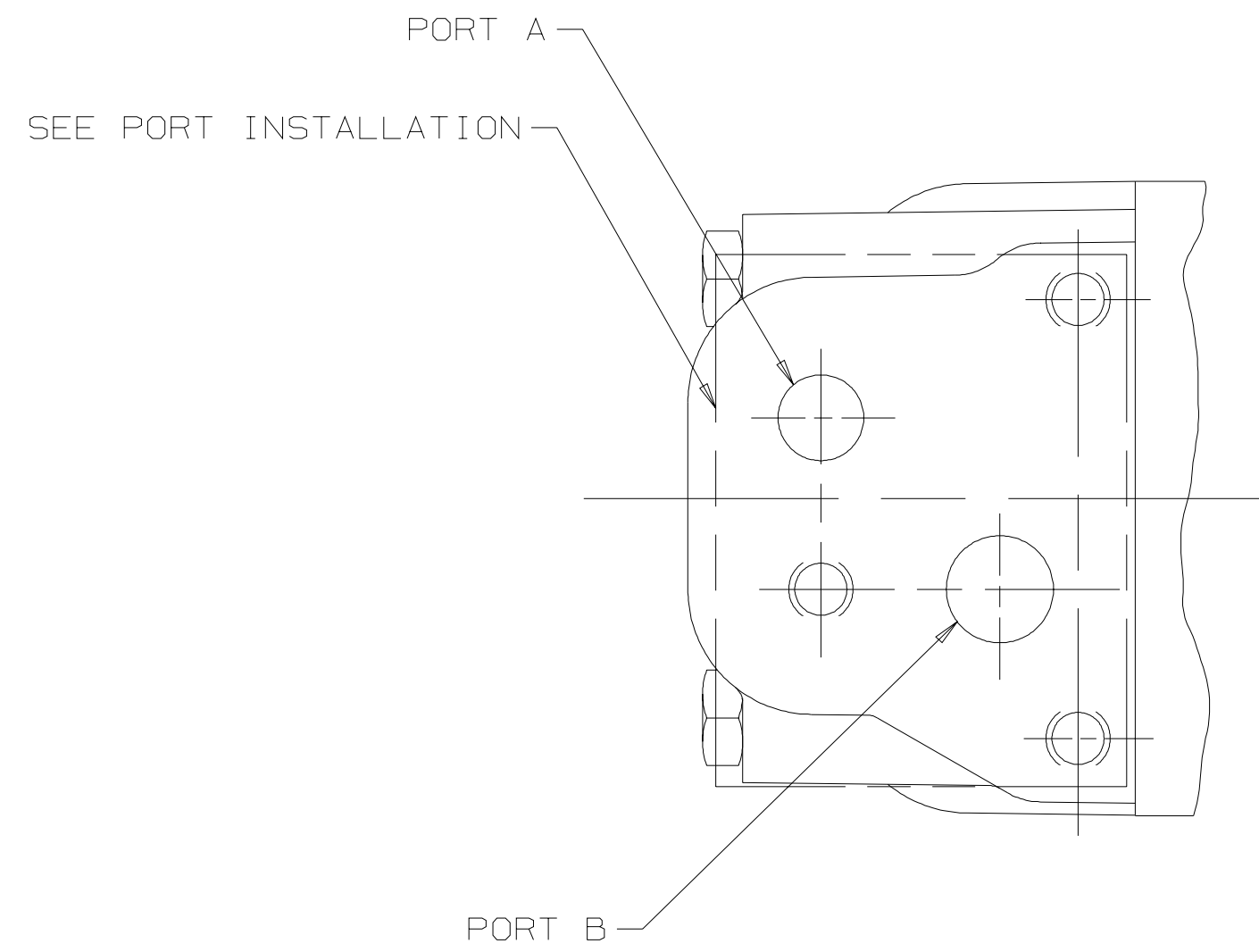


SYM	REVISION	BY	DATE	ECN
A	ENGINEERING RELEASE	AGJ	5-26-93	22833
B	(4A)NOTE 2 WAS MOUNTING TYPE: J	AGJ	5/13/02	41044
C	REVISED	KNR	8/31/09	M76813



NOTE

1 ROTATION:
 STANDARD: WHEN FACING SHAFT END OF MOTOR, SHAFT TO ROTATE;
 CLOCKWISE WHEN PORT "A" IS PRESSURIZED
 COUNTERCLOCKWISE WHEN PORT "B" IS PRESSURIZED
 REVERSE: WHEN FACING SHAFT END OF MOTOR, SHAFT TO ROTATE;
 CLOCKWISE WHEN PORT "B" IS PRESSURIZED
 COUNTERCLOCKWISE WHEN PORT "A" IS PRESSURIZED

2 MOUNTING TYPE: AJ
 STANDARD (MAGNETO), 4 BOLT: Ø 82.6 [3.25] PILOT
 Ø 13.59 [.535] HOLES ON Ø 106.4 [4.19] BOLT CIRCLE
 2.79 [.110] PILOT LENGTH

REVIEWED FOR CLASSIFICATION PER ESP-042

DRAWING BASED ON ANSI Y14.5M-1982

UNLESS OTHERWISE SPECIFIED ALL DIMENSIONS ARE IN MILLIMETERS (INCHES)

INCHES MILLIMETERS (INCHES)

TOLERANCES

.XX +REF

.XXX +ONLY

UNSPECIFIED RADII ARE

UNSPECIFIED DRAFT ANGLES ARE

DRAWING FORMAT CAD MANUAL

THE REPRODUCTION, DISTRIBUTION, AND UTILIZATION OF THIS DOCUMENT, AS WELL AS THE COMMUNICATION OF ITS CONTENTS TO OTHERS WITHOUT EXPLICIT AUTHORIZATION IS PROHIBITED. OFFENDERS WILL BE HELD LIABLE FOR THE PAYMENT OF DAMAGES. ALL RIGHTS RESERVED IN THE EVENT OF THE GRANT OF A PATENT, UTILITY MODEL, OR DESIGN. (PER ISO 16016)

DRAWN BY/DATE A. JOHNSON 6-8-93

CHECKED BY/DATE SJR 6-24-93

ENGRG. BY/DATE SJZ 6-29-93

METALLURGY BY/DATE

MATERIAL/HEAT TREAT

TITLE 2000 SERIES MOTOR INSTALL

NUMBER A-671-004

SCALE 1/1

SHEET 1 OF 1

Danfoss