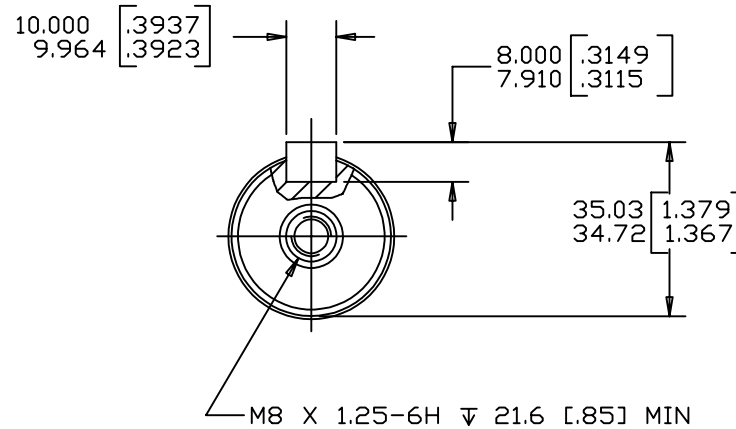
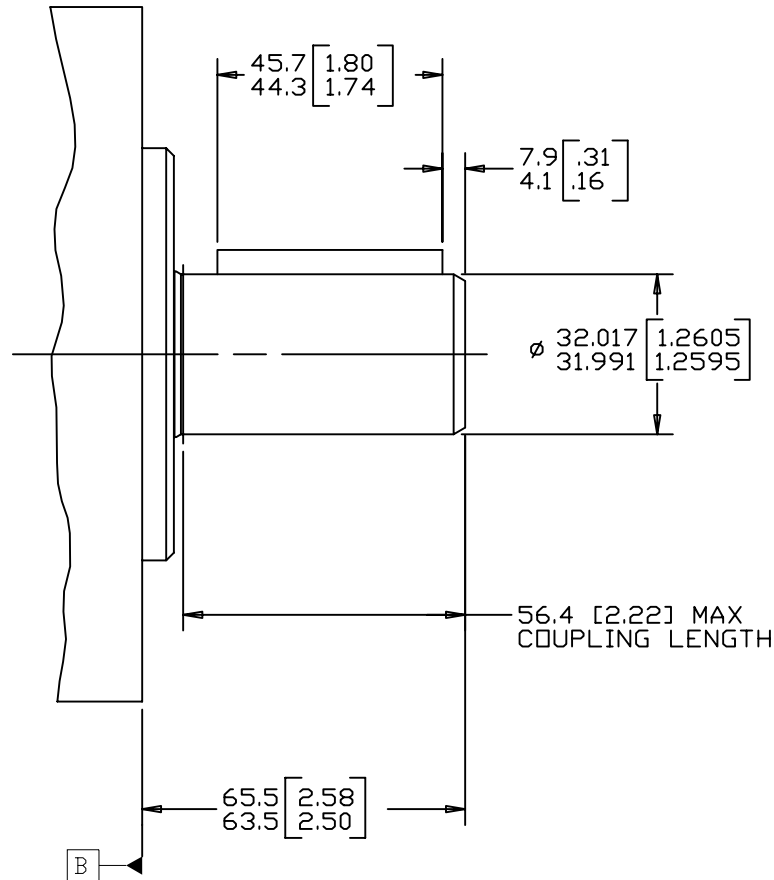


REV	DESCRIPTION	BY	DATE	ECN
A	ENGINEERING RELEASE	AGJ	5-26-93	22833
B	7.9/4.1 [.31/.16] WAS 9.2/4.5 [.36/.18]	RAF	2-8-96	M14882
C	ADDED MOUNTING TYPE OPTION W TO NOTE 1	AGJ	6-1-99	M21685
D	NOTE 1 WAS MOUNTING TYPE: OPTION H OR W	AGJ	5-13-02	41044
E	65.5/63.5 [2.58/2.50] WAS 65.8/63.5 [2.59/2.50]	AGJ	5-17-04	47918
F	NOTE 2 WAS OUTPUT SHAFT: OPTION 23 & 30	PM	4-4-06	54522
G	NOTE 1 WAS MOUNTING TYPE: OPTION AH, AW & AY	YUP	1-05-17	M103022



REVIEWED FOR CLASSIFICATION PER ESP-042

NOTE

- 1 MOUNTING TYPE: OPTION AH, AS, AW & AY
- 2 OUTPUT SHAFT: OPTION 16 & 22

UNLESS OTHERWISE SPECIFIED ALL DIMENSIONS ARE IN INCHES <input type="checkbox"/> MILLIMETERS <input checked="" type="checkbox"/>		DRAWING BASED ON ASME Y14.5-2009	
TOLERANCES X ± ---- XX ± REF XXX ± ONLY ∠ ± ----		THE REPRODUCTION, DISTRIBUTION, AND UTILIZATION OF THIS DOCUMENT, AS WELL AS THE COMMUNICATION OF ITS CONTENTS TO OTHERS WITHOUT EXPLICIT AUTHORIZATION IS PROHIBITED. OFFENDERS WILL BE HELD LIABLE FOR THE PAYMENT OF DAMAGES. ALL RIGHTS RESERVED IN THE EVENT OF THE GRANT OF A PATENT, UTILITY MODEL, OR DESIGN. (PER ISO 16016)	
UNSPECIFIED RADII ARE ----		DRAWN BY/DATE: A. JOHNSON 3-19-93 CHECKED BY/DATE: SDR 6-24-93 ENGRG BY/DATE: SJZ 6-28-93 METALLURGY BY/DATE: ----	MATERIAL/HEAT TREAT TITLE: 2000 SERIES MOTOR SHAFT INSTALLATION
UNSPECIFIED DRAFT ANGLES ARE ----		THIRD ANGLE PROJECTION 	MICROINCHES <input type="checkbox"/> MICROMETERS <input type="checkbox"/> ARITHMETICAL AVERAGE <input checked="" type="checkbox"/>
DRAWING FORMAT CADD <input checked="" type="checkbox"/> MANUAL <input type="checkbox"/>		DO NOT SCALE	NUMBER: A-687-023 SCALE: 1/1 SHEET 1 OF 1

