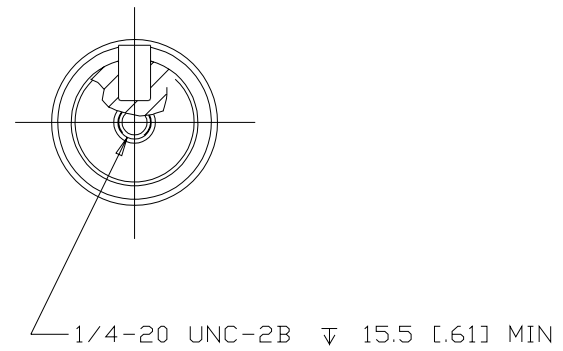
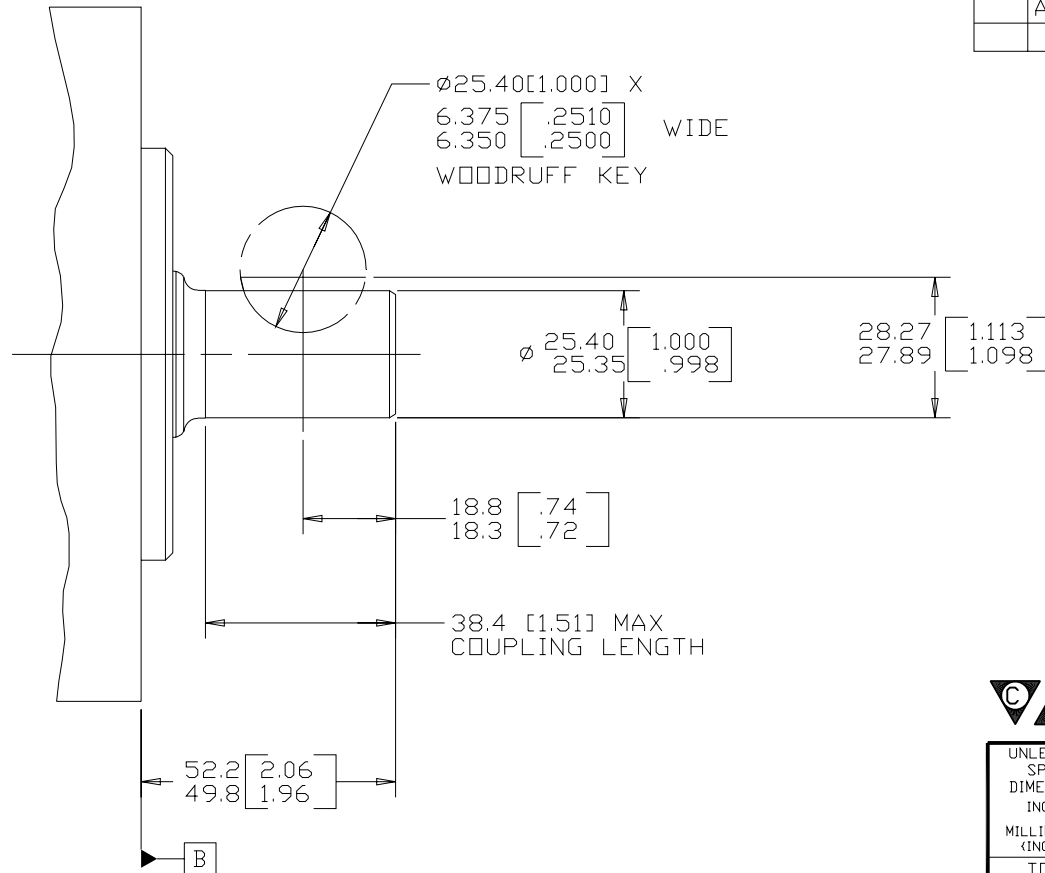


REV	DESCRIPTION	BY	CHK	DATE	ECN
A	ENGINEERING RELEASE	RAF		10-24-96	M16334
B	NOTE 1 WAS MOUNTING TYPE: OPTION H	AGJ		5-13-02	41044
C	NOTE 2 WAS OUTPUT SHAFT: OPTION 01 & 22	PM		4-4-06	54522
D	REVISED AS PER STACK-UP ADDED MOUNTING TYPE: OPTION AS	SMT		02-20-12	M84836



NOTE

- 1 MOUNTING TYPE: OPTION AH OR OPTION AS
- 2 OUTPUT SHAFT: OPTION 01 & 15

**CS** REVIEWED FOR CLASSIFICATION PER ESP-042

UNLESS OTHERWISE SPECIFIED ALL DIMENSIONS ARE IN INCHES <input type="checkbox"/> MILLIMETERS (INCHES) <input checked="" type="checkbox"/>		DRAWING BASED ON ASME Y14.5M-1994	
<p>TOLERANCES</p> <p>.X ± ---</p> <p>.XX ± ---</p> <p>.XXX ± ---</p> <p>&lt; ± .---</p> <p>UNSPECIFIED RADII ARE: ---</p> <p>UNSPECIFIED DRAFT ANGLES ARE: ---</p> <p>B SIZE</p>		<p>THE REPRODUCTION, DISTRIBUTION, AND UTILIZATION OF THIS DOCUMENT, AS WELL AS THE COMMUNICATION OF ITS CONTENTS TO OTHERS WITHOUT EXPLICIT AUTHORIZATION IS PROHIBITED. OFFENDERS WILL BE HELD LIABLE FOR THE PAYMENT OF DAMAGES. ALL RIGHTS RESERVED IN THE EVENT OF THE GRANT OF A PATENT, UTILITY MODEL, OR DESIGN. (PER ISO 16016)</p> <p><i>Danfoss</i></p>	
<p>DRAWN BY/DATE: <b>RAF</b> 10-30-96</p> <p>CHECKED BY/DATE: <b>GCB</b> 10-30-96</p> <p>ENGRG BY/DATE: <b>MLB</b> 10-30-96</p> <p>METALLURGY BY/DATE: ---</p>		<p>MATERIAL/HEAT TREAT: ---</p> <p>TITLE: 2000 SERIES MOTOR SHAFT INSTALLATION</p>	
<p>THIRD ANGLE PROJECTION</p> <p>DO NOT SCALE</p>		<p>NUMBER: A-687-001</p> <p>SCALE: 1/1 SHEET 1 OF 1</p>	