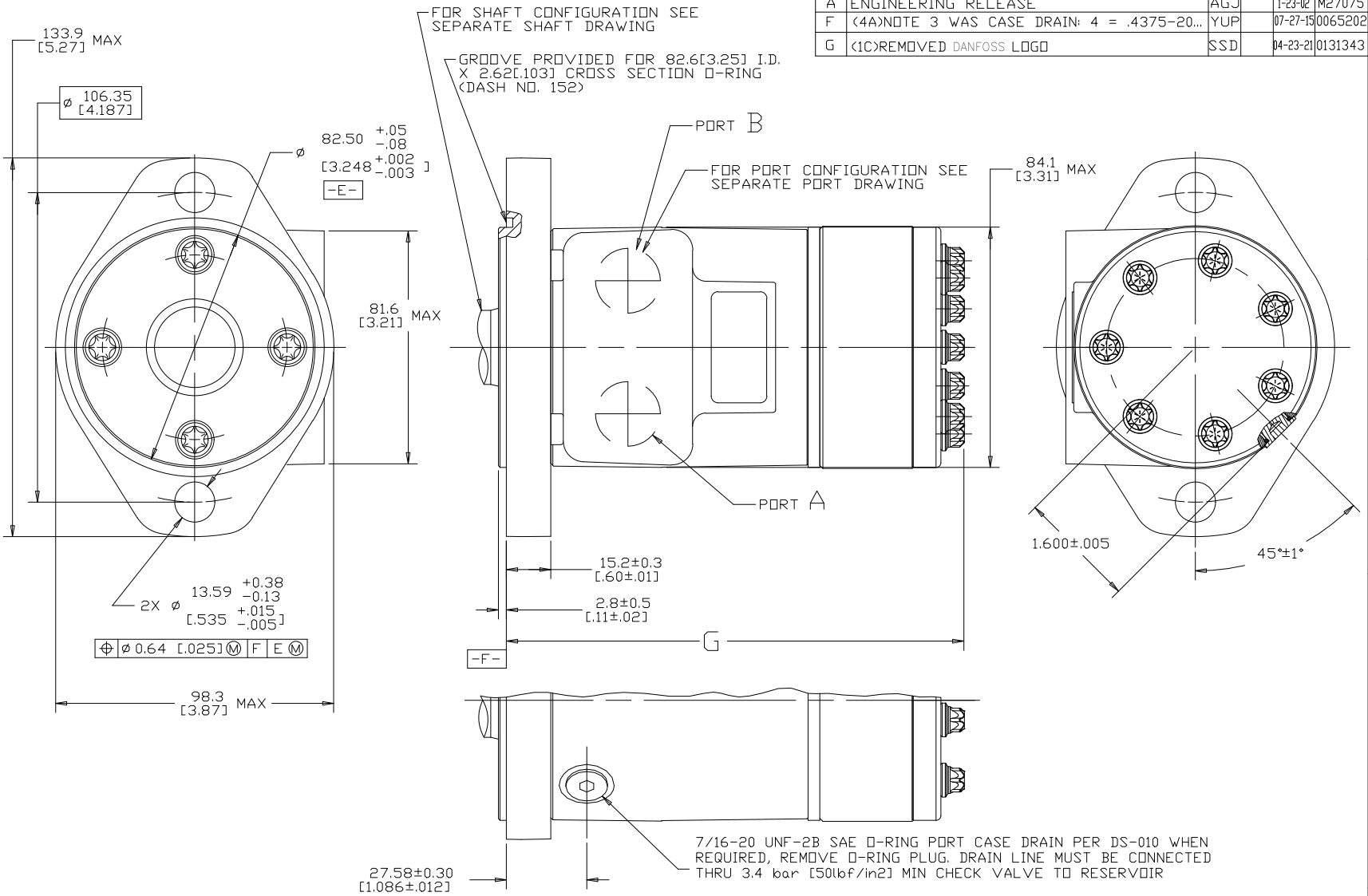


DISP CODE	G	MAX
022	132.7	[5.22]
025	133.5	[5.26]
028	132.7	[5.22]
035	136.5	[5.37]
045	136.5	[5.37]
059	139.5	[5.49]
073	142.8	[5.62]
089	146.4	[5.76]
097	148.2	[5.84]
113	151.7	[5.97]
141	158.1	[6.22]
179	166.7	[6.56]
226	177.1	[6.97]
451	228.0	[8.98]



REV	DESCRIPTION	BY	CHK	DATE	ECN
A	ENGINEERING RELEASE	AGJ		1-23-02	M27075
F	<4A>NOTE 3 WAS CASE DRAIN: 4 = .4375-20...	YUP		07-27-15	0065202
G	<1C>REMOVED DANFOSS LOGO	SSD		04-23-21	0131343

NOTE

- 1 ROTATION STANDARD: WHEN FACING SHAFT END OF MOTOR, SHAFT TO ROTATE CLOCKWISE WHEN PORT "A" IS PRESSURIZED. COUNTERCLOCKWISE WHEN PORT "B" IS PRESSURIZED.

REVERSE: WHEN FACING SHAFT END OF MOTOR, SHAFT TO ROTATE CLOCKWISE WHEN PORT "B" IS PRESSURIZED. COUNTERCLOCKWISE WHEN PORT "A" IS PRESSURIZED.
- 2 MOUNTING FLANGE
AA = 2 BOLT STD: ∅82.50 [3.248] X 3.05 [.120] PILOT, ∅13.59 [5.35] MOUNTING HOLES ON ∅106.35 [4.187] B.C.
- 3 CASE DRAIN
04 = .4375-20 UNF-2B SAE O-RING PORT (SIDE OF HOUSING)

CS REVIEWED FOR CLASSIFICATION PER ESP-042

UNLESS OTHERWISE SPECIFIED ALL DIMENSIONS ARE IN		DRAWING BASED ON ANSI Y14.5M-1982	
INCHES <input type="checkbox"/>	MILLIMETERS <input checked="" type="checkbox"/>	THE REPRODUCTION, DISTRIBUTION, AND UTILIZATION OF THIS DOCUMENT, AS WELL AS THE COMMUNICATION OF ITS CONTENTS TO OTHERS WITHOUT EXPLICIT AUTHORIZATION IS PROHIBITED. OFFENDERS WILL BE HELD LIABLE FOR THE PAYMENT OF DAMAGES. ALL RIGHTS RESERVED IN THE EVENT OF THE GRANT OF A PATENT, UTILITY MODEL, OR DESIGN. (PER ISO 16016)	
TOLERANCES			
X ± -----	XXX ± -----		
UNSPECIFIED RADIUS ARE -----		DRAWN BY/DATE: AGJ 1-30-02	MATERIAL/HEAT TREAT
UNSPECIFIED DRAFT ANGLES ARE -----		CHECKED BY/DATE: MLL 1-31-02	TITLE
THIRD ANGLE PROJECTION		ENGRG BY/DATE: JML 1-31-02	H MOTOR INSTALLATION
DRAWING FORMAT CADD <input checked="" type="checkbox"/> MANUAL <input type="checkbox"/>		METALLURGY BY/DATE	NUMBER
DO NOT SCALE		ARITHMETICAL AVERAGE	A-37-467
		SCALE 1/1	SHEET 1 OF 1