

DISPLACEMENT CODE	G MAX
022	132.7 [5.22]
025	133.5 [5.26]
028	132.7 [5.22]
035	136.5 [5.37]
045	136.5 [5.37]
059	139.5 [5.49]
073	142.8 [5.62]
089	146.4 [5.76]
097	148.2 [5.84]
113	151.7 [5.97]
141	158.1 [6.22]
179	166.7 [6.56]
226	177.1 [6.97]
451	228.0 [8.98]

REV	DESCRIPTION	BY	DATE	ECN
A	ENGINEERING RELEASE	AGJ	12-2-93	M9156
B	(4B)Ø13.59+0.38/-0.13 [5.35+0.015/-0.005] WAS Ø13.59±0.13 [5.35±0.005]	AGJ	1-28-02	39853
C	-1>(4C)WAS 5.17/131,4 MAX -2>(4B)WAS 3.81/96,8 MAX	SJP	04-07-04	46856
D	-1>REVISED PICTORIALY -2>(4D)UPDATED TABULATION FOR G MAX -3>REVISED NOTE AS PER ESP-022-69	AAB	02-17-14	0054755
E	(1C)ADDED EATON LOGO TO END CAP	AAB	01-22-15	0061684
F	NOTE 3 WAS CASE DRAIN: 3 = MANIFOLD...	ABH	07-27-15	0065202

D

D

C

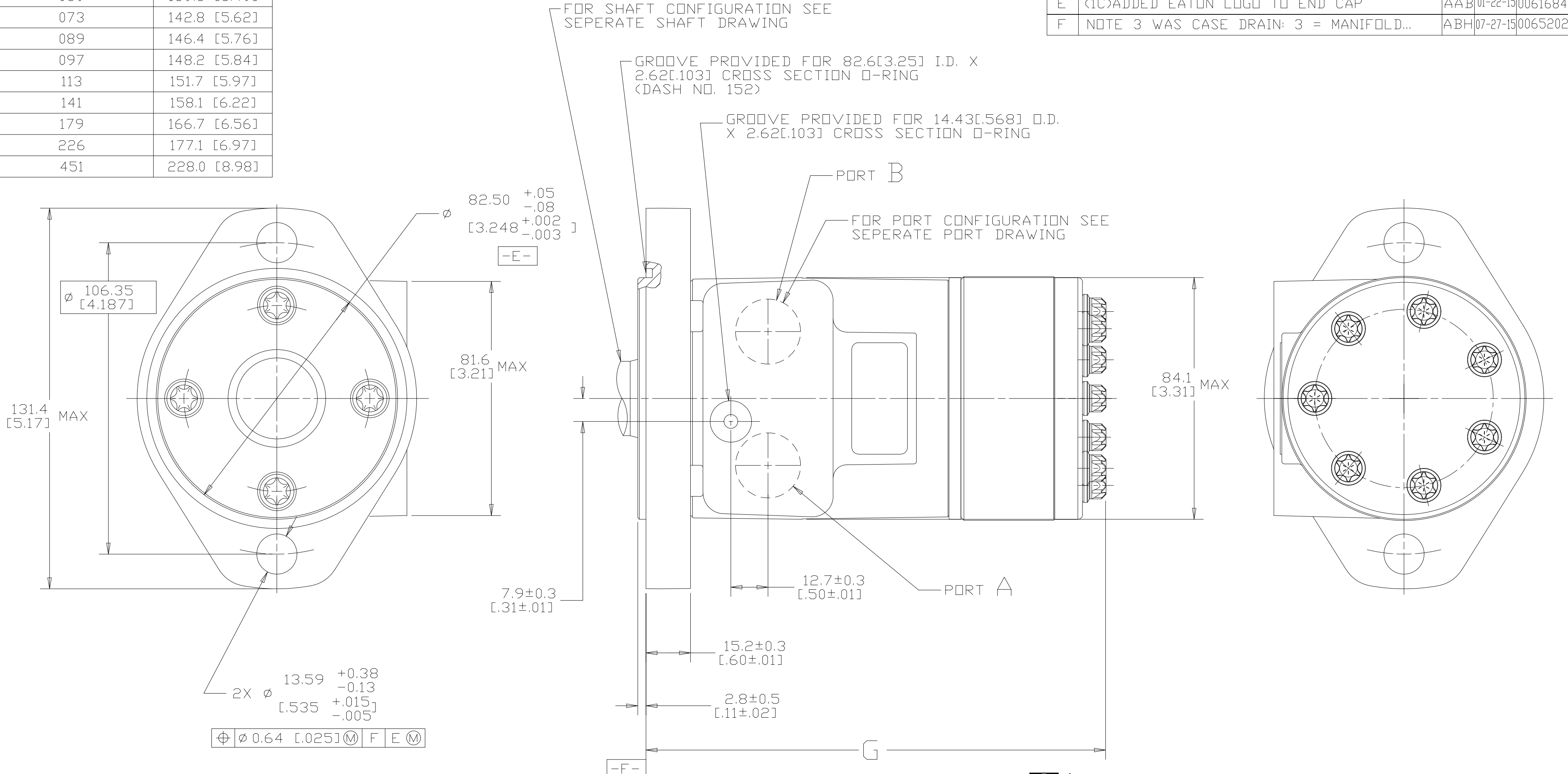
C

B

B

A

A



NOTE

- ROTATION: STANDARD; WHEN FACING SHAFT END OF MOTOR, SHAFT TO ROTATE CLOCKWISE WHEN PORT "A" IS PRESSURIZED COUNTERCLOCKWISE WHEN PORT "B" IS PRESSURIZED REVERSE; WHEN FACING SHAFT END OF MOTOR, SHAFT TO ROTATE CLOCKWISE WHEN PORT "B" IS PRESSURIZED COUNTERCLOCKWISE WHEN PORT "A" IS PRESSURIZED
- MOUNTING FLANGE: AA = 2 BOLT STD: Ø82.50 [3.248] X 3.05 [.120] PILOT, Ø13.59 [5.35] MOUNTING HOLES ON Ø106.35 [4.187] BOLT CIRCLE
- CASE DRAIN: 03 = MANIFOLD CASE DRAIN

CS REVIEWED FOR CLASSIFICATION PER ESP-042

UNLESS OTHERWISE SPECIFIED ALL DIMENSIONS ARE IN INCHES <input type="checkbox"/> MILLIMETERS (INCHES) <input checked="" type="checkbox"/>	DRAWING BASED ON ANSI Y14.5M-1982	
	THE REPRODUCTION, DISTRIBUTION AND UTILIZATION OF THIS DOCUMENT AS WELL AS THE COMMUNICATION OF ITS CONTENTS TO OTHER WITHOUT EXPLICIT AUTHORIZATION IS PROHIBITED. OFFENDERS WILL BE HELD LIABLE FOR THE PAYMENT OF DAMAGES. ALL RIGHT RESERVED IN THE EVENT OF THE GRANT OF A PATENT, UTILITY MODEL OR DESIGN. (PER ISO 16016)	
TOLERANCES x ± ---- .xx ± REF .xxx ± ONLY < ± ----	DRAWN BY/DATE A. JOHNSON 12-6-93 CHECKED BY/DATE KJR 12-9-93 ENGRG BY/DATE RVA 12-9-93 METALLURGY BY/DATE ----	MATERIAL/HEAT TREAT
UNSPECIFIED RADII ARE ----	THIRD ANGLE PROJECTION	TITLE H MOTOR INSTALLATION
UNSPECIFIED DRAFT ANGLES ARE ----	DO NOT SCALE	MICROINCHES <input type="checkbox"/> MICROMETERS (MICROINCHES) <input type="checkbox"/> ARITHMETICAL AVERAGE <input checked="" type="checkbox"/>
DRAWING FORMAT CADD <input checked="" type="checkbox"/> MANUAL <input type="checkbox"/>	SCALE 1/1	NUMBER A-37-355 SHEET 1 OF 1

