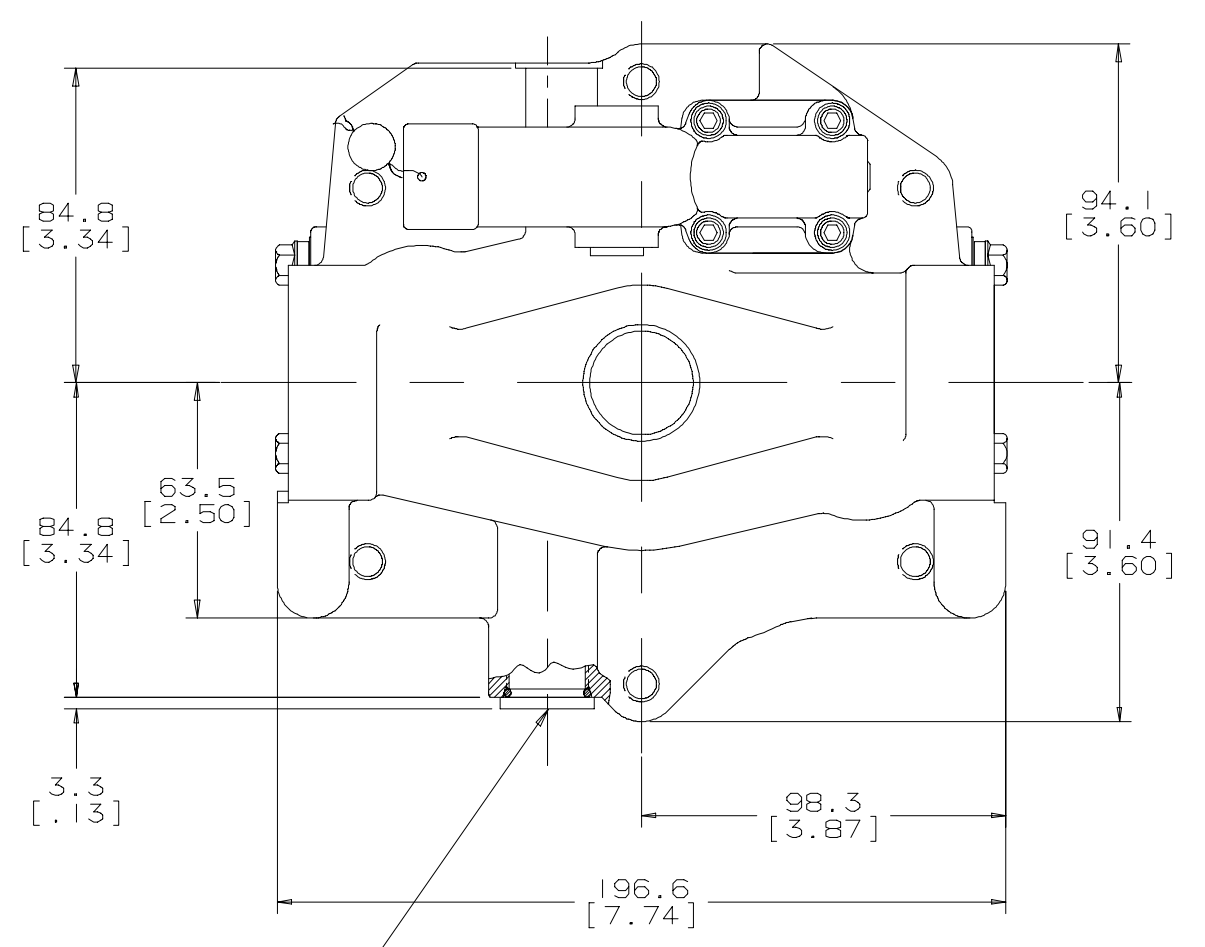
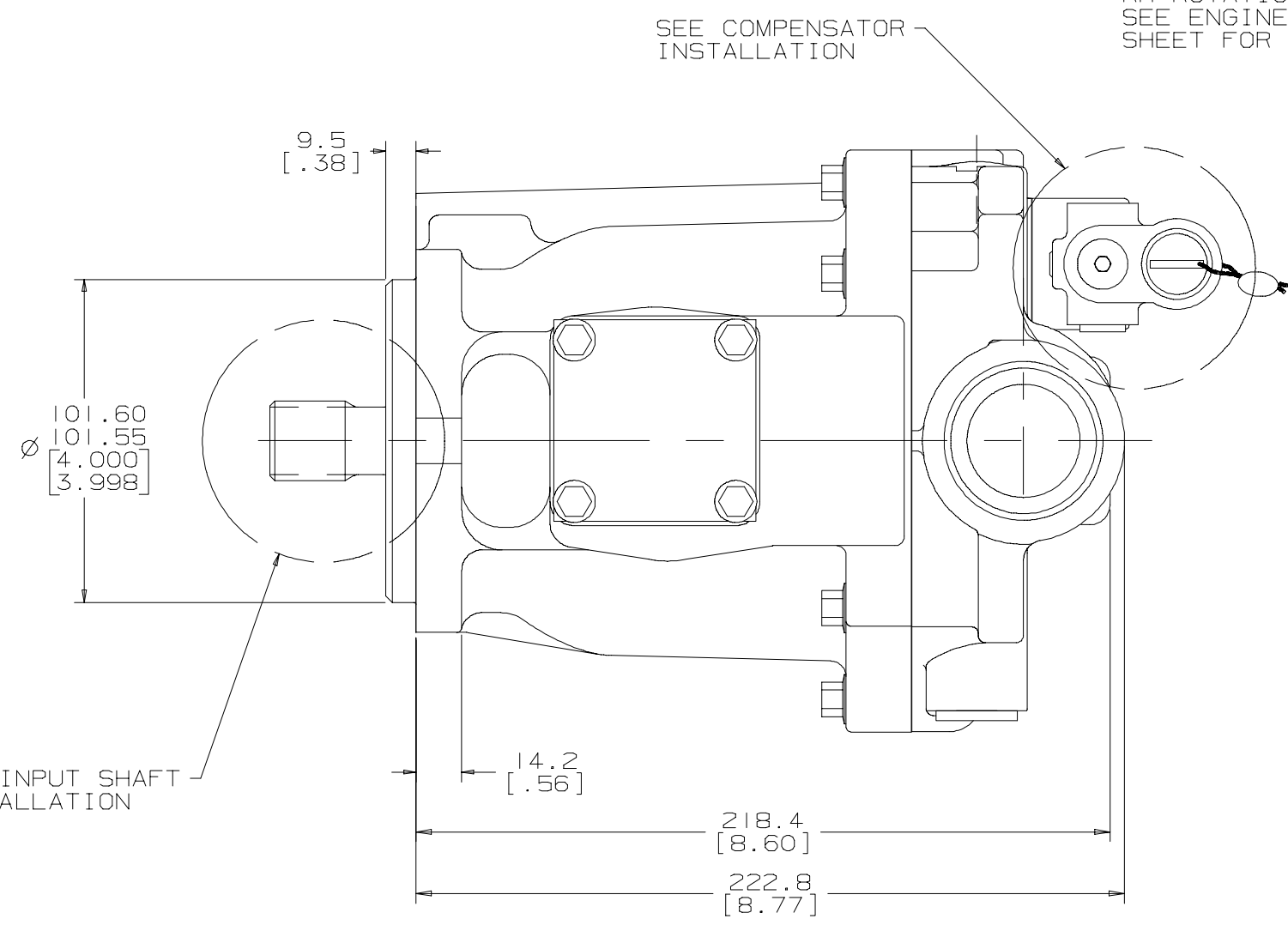
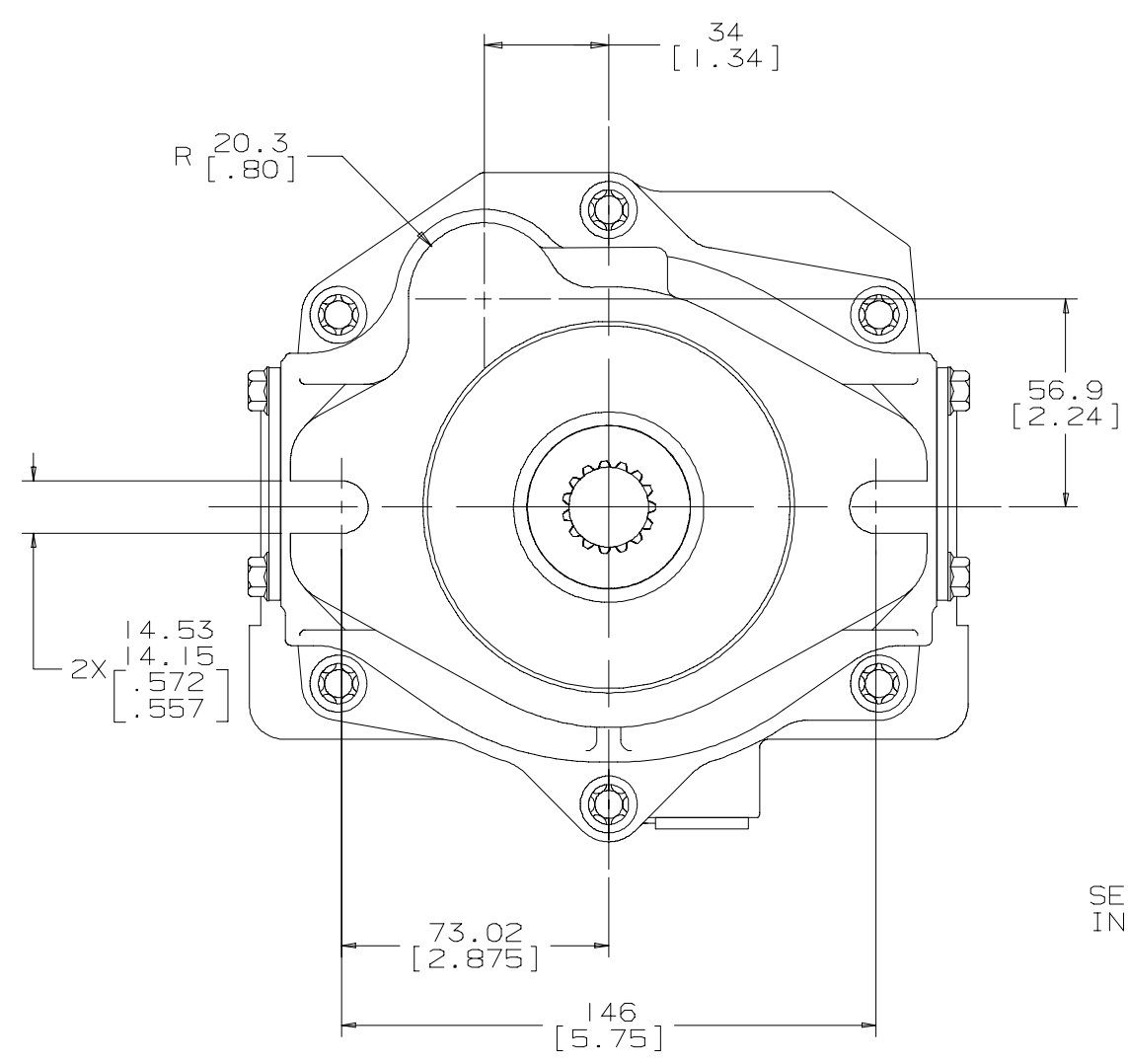
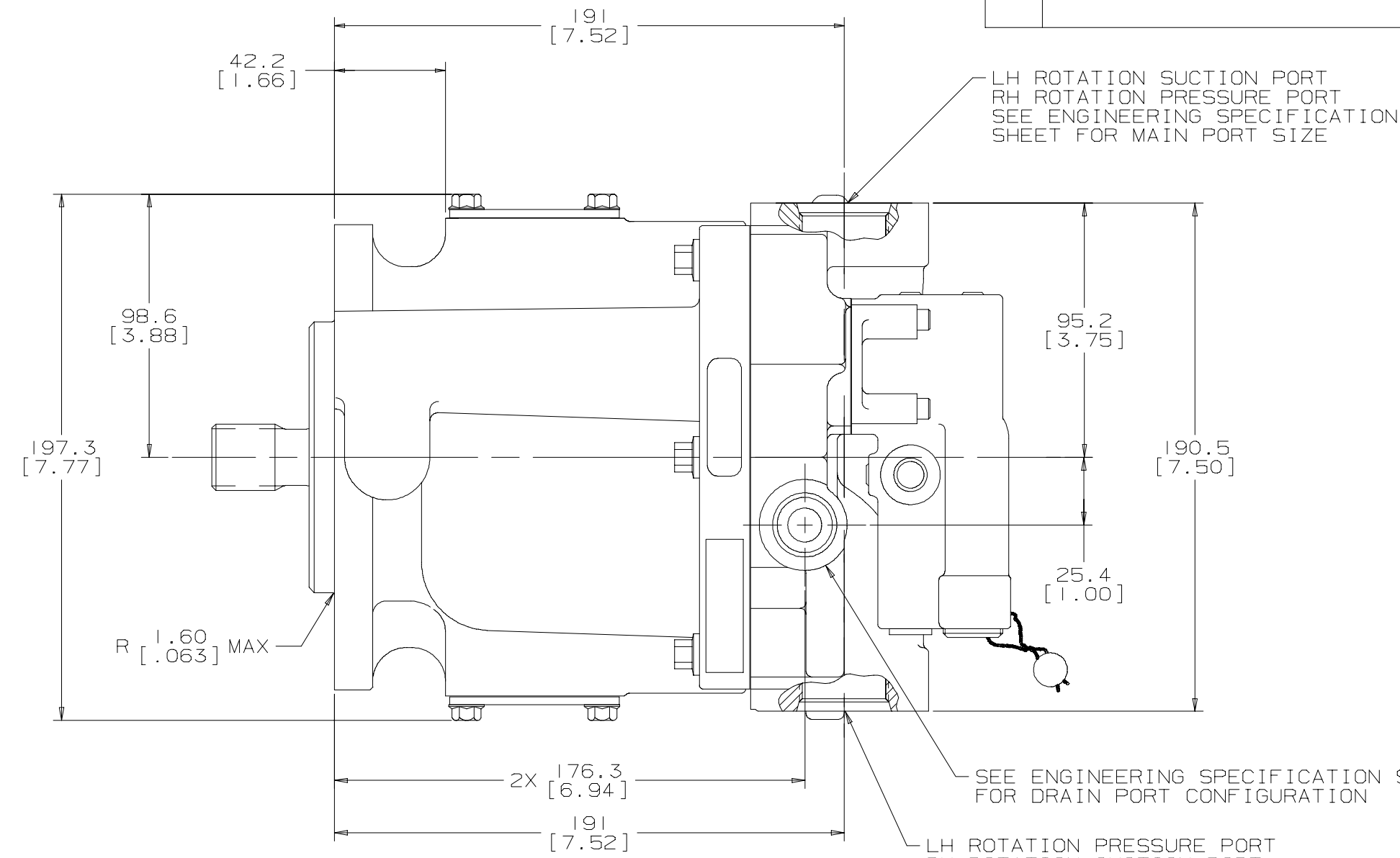


REV	DESCRIPTION	BY	CHK	DATE	ECN
A	ENGINEERING RELEASE	SPH	MJP	6-21-00	36181



SEE ENGINEERING SPECIFICATION SHEET FOR DRAIN PORT CONFIGURATION

2 THE MAXIMUM ECCENTRICITY BETWEEN SHAFT O.D. (OR SPLINE P.D.) AND PILOT DIA. IS [.006] T.I.R. WHICH INCLUDES AN ECCENTRICITY OF [.003] T.I.R. BETWEEN THE SHAFT AND IT'S BEARING PILOT. MAXIMUM SQUARENESS DEVIATION OF MOUNTING FLANGE FACE TO AXIS OF SHAFT IS [.0015 IN/IN]. MATING PART TOLERANCES AND INSTALLATION PRACTICES MUST BE COMPATIBLE SO THAT INTERFERENCES DO NOT RESULT IN SHAFT SIDE LOAD DURING OPERATION.

1 INSTALLATION INFORMATION:  
HORIZONTAL MOUNTING IS RECOMMENDED TO MAINTAIN NECESSARY CASE FLUID LEVEL. THE CASE DRAIN LINE MUST BE FULL SIZE UNRESTRICTED AND CONNECTED FROM THE UPPERMOST DRAIN PORT DIRECTLY TO THE RESERVOIR IN SUCH A MANNER THAT THE HOUSING REMAINS FILLED WITH FLUID. PIPING OF DRAIN LINE MUST PREVENT SIPHONING. NO OTHER LINES ARE TO BE CONNECTED TO THIS DRAIN LINE. CASE LINE PRESSURE NOT TO EXCEED 0.00-0.34 bar [0-5 lbf/in<sup>2</sup>].  
STARTING:  
BEFORE STARTING, FILL CASE WITH SYSTEM FLUID THRU UPPERMOST DRAIN PORT. HOUSING MUST BE KEPT FULL AT ALL TIMES TO PROVIDE INTERNAL LUBRICATION.

3 CARE SHOULD BE TAKEN THAT MECHANICAL AND HYDRAULIC RESONANCES ARE AVOIDED IN THE APPLICATION OF THIS COMPONENT. SUCH RESONANCES CAN SERIOUSLY COMPROMISE THE LIFE AND/OR SAFE OPERATION OF THE COMPONENT.

UNLESS OTHERWISE SPECIFIED ALL DIMENSIONS ARE IN INCHES <input type="checkbox"/> MILLIMETERS <input checked="" type="checkbox"/>	DRAWING BASED ON ANSI Y14.5M-1982		
	THE REPRODUCTION, DISTRIBUTION, AND UTILIZATION OF THIS DOCUMENT, AS WELL AS THE COMMUNICATION OF ITS CONTENTS TO OTHERS WITHOUT EXPLICIT AUTHORIZATION IS PROHIBITED. OFFENDERS WILL BE HELD LIABLE FOR THE PAYMENT OF DAMAGES. ALL RIGHTS RESERVED IN THE EVENT OF THE GRANT OF A PATENT, UTILITY MODEL, OR DESIGN (PER ISO 16016)		
TOLERANCES .x ± --- .xx ± REF .xxx ± ONLY ∠ ± ---	DRAWN BY/DATE SPH 8-30-00 CHECKED BY/DATE MJP 12-22-00	MATERIAL/HEAT TREAT	NUMBER A-2185-015 SCALE 1/1 SHEET 1 OF 1
UNSPECIFIED RADI ARE --- UNSPECIFIED DRAFT ANGLES ARE ---	ENGR BY/DATE NJA 12-22-00 METALLURGY --- BY/DATE ---	TITLE PISTON PUMP INSTALLATION	
DRAWING FORMAT CADD <input checked="" type="checkbox"/> MANUAL <input type="checkbox"/>	THIRD ANGLE PROJECTION	DO NOT SCALE	ARITHMETICAL AVERAGE